



**SC**  
**SHEARCORE™**

***FORTRESS™***  
**BY SHEARCORE™**

**THE NEW WORLD STANDARD**





**Made in the USA**

**Family Owned, Privately Owned**

What sets Fortress apart? In a word: **POWER.**

ShearCore combines hydraulic and geometric excellence to produce a shear that is **unmatched in real-world performance.**

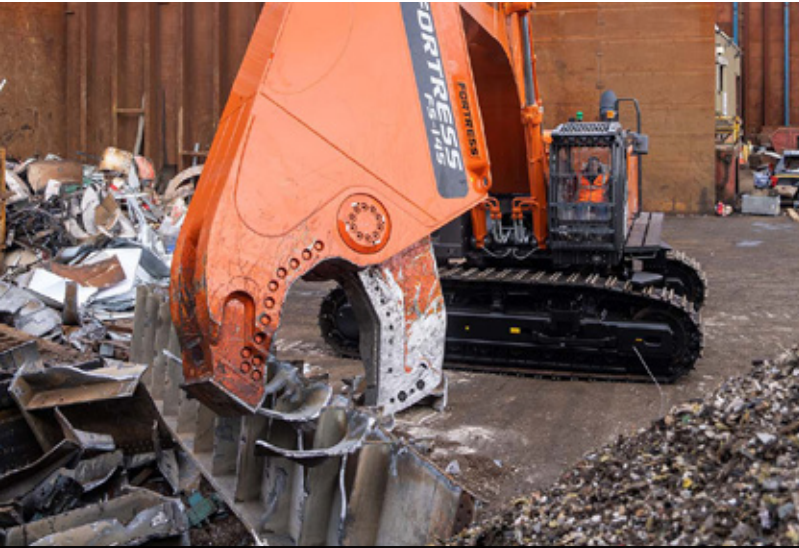
**FORTRESS™ Shear Specifications**

Model	Approx. Shear Weight (lbs.)	Jaw Opening (in.)	Jaw Depth (in.)	Reach	Min Excavator Boom Mount (lbs.)	Min Excavator Stick Mount (lbs.)
FS25R	5,900	23	19	8' 8"	30,000	45,000
FS35R	7,200	26	23	9' 5"	40,000	67,000
FS45R	11,200	28	28	10' 8"	50,000	90,000
FS55R	13,000	30	30	11' 8"	57,000	110,000
FS75R	15,700	32	32	12' 0"	75,000	125,000
FS85R	17,500	35	38	13' 4"	82,000	165,000
FS95R	21,600	39	42	13' 7"	105,000	185,000
FS145R	28,600	43	46	14' 4"	145,000	250,000
FS245	50,600	48	52	17' 2"	Contact us	Contact us

Models listed are rotating shears. Non-rotating models are available in FS45-FS245. Weights may vary depending on configuration options. FS25-FS35 listed weight is typical 3rd member universal. FS45-FS245 listed weight is typical 2nd member universal mount.



# MOBILE SHEARS



**Structurally Superior**



**Unmatched Power to Weight**

More power requires more strength and rigidity. Our unique manufacturing capabilities allow us to utilize **6" high-yield plate** and use fewer overall components.

Fewer components mean less welds creating a **structurally superior shear**.

Two piece bolt-on piercing tip

Unmatched power at the tip

Massive solid shaft pivot group boosts performance and durability

Upper and lower are milled from 6" high yield plate steel

Razor blade that spans the outside of the guide blades, allowing easier shimming

Machined weld seams provide superior fitment between lower jaw and stick body, improving strength

All hydraulic circuits are duty cycle tested to typical operating pressures and flow prior to delivery





**Made in the USA**



**Family Founded, Privately Owned**

## PRIMARY DEMOLITION REDEFINED

The Fortress FC is a new class of tool with unique construction and capabilities.

The FC line utilizes a solid upper with no welds and press-fit pivot group (like our shears) allowing for tolerances tight enough to shear rebar all the way out to the tip.

### Concrete Processor Specifications

Model	Approx. Weight (lbs.)	Jaw Opening (in.)	Jaw Depth (in.)	Reach	Minimum Excavator 2nd Member Mount (lbs.)	Minimum Excavator 3rd Member Mount (lbs.)
FC25	6,100	32	30	7' 4"	30,000	45,000
FC35	8,700	42	38	9' 4"	40,000	66,000
FC45	10,200	53	44	10' 4"	60,000	90,000

Weights may vary depending on configuration options. Listed weight is flat top without bracket.



OilQuick Americas is a manufacturing partner. All Fortress shears and processors can be fitted with an OilQuick Automatic Quick Coupler System



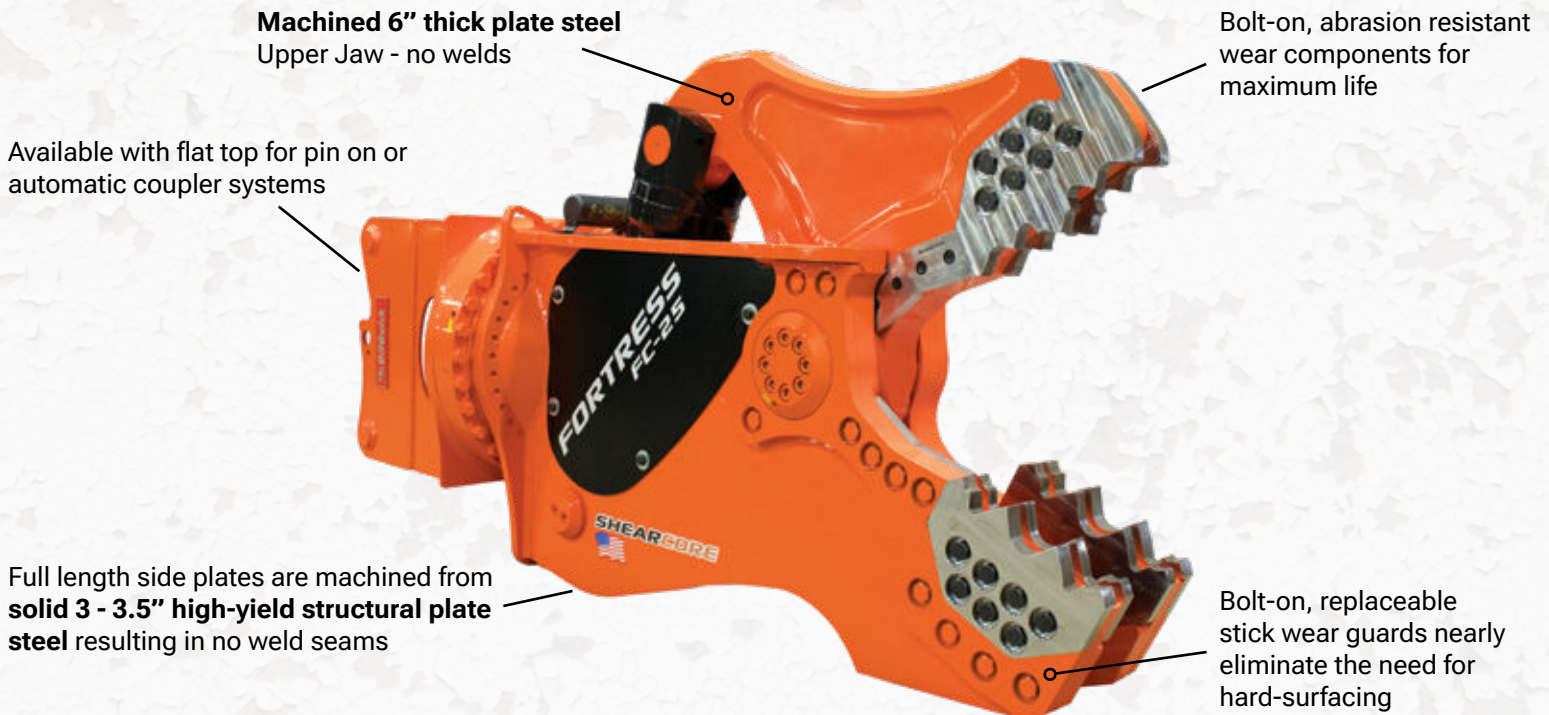
# CONCRETE PROCESSOR



**Structurally Superior**



**Unmatched Power to Weight**



**Machined 6" thick plate steel**  
Upper Jaw - no welds

Bolt-on, abrasion resistant wear components for maximum life

Available with flat top for pin on or automatic coupler systems

Full length side plates are machined from **solid 3 - 3.5" high-yield structural plate steel** resulting in no weld seams

Bolt-on, replaceable stick wear guards nearly eliminate the need for hard-surfacing





# MANUFACTURED IN SUPERIOR, WISCONSIN



**All Fortress shears are manufactured in Superior, Wisconsin, USA.**

**We're proud of that!**

Our cutting-edge factory on Lake Superior's western tip boasts advanced manufacturing equipment, robotic welding stations, CNC machining centers, press brake, burn table, cut-off saw, and a comprehensive parts department. We also have a rebuild center and a skilled manufacturing team.

Our approach to Fortress design is straight forward: **maximize power and durability**. Leveraging our strong engineering and manufacturing expertise, we've developed attachments that are both more powerful and structurally robust.

Fortress has swiftly become the global standard in demolition and scrap recycling attachments. We're proud to be known for our innovative design, world-class engineering, and top-notch manufacturing.

## Service

When you choose a Fortress attachment, you join the Fortress Family, where **exceptional service is our hallmark**. Our dedicated service team takes pride in providing top-tier support.

Our team of skilled Fortress field technicians is readily available to offer on-site technical support and training as needed. We're here to ensure your equipment operates at its best.

For swift responses to your installation, service, and parts requirements, our factory support team is always just a call or an email away.

**1-715-395-5810**

**[Service@ShearCore.com](mailto:Service@ShearCore.com)**







**BLADECORE™**

**SHEAR BLADES  
MADE TO WORK**

**Premium quality replacement blades for mobile and stationary shears.**

### **Experience Matters**

We have extensive expertise in the demolition and recycling industries and use that experience to design premium replacement blades that offer extended blade life, increased flexibility, and reduced cracking.

BladeCore provides blade kits, bolts, and shim kits for a variety of **mobile shears** including **Genesis®**, **Labounty®**, and **Fortress®**.

We also provide blades for **stationary shear** manufacturers such as **Sierra®**, **Copex®**, **Harris®**, **Metso®**, and **Bonfiglioli®**.

*We stand firmly behind the notion that premium quality, paired with superior service and strong relationships, are essential to your **success**.*

**BladeCore.net**

1-715-395-5813

Info@BladeCore.net

155 Main Street, Superior, WI 54480



# **FORTRESS**<sup>™</sup> **BY SHEARCORE**<sup>™</sup>

**THE NEW WORLD STANDARD**

**ShearCore.com**

**Sales** +1 (715) 395-3715

**Parts** +1 (715) 395-5811

**Service** +1 (715) 395-5810

155 Main Street Superior, WI 54880 USA



**EXODUS**  
GLOBAL

ShearCore is part of Exodus Global, a family-owned company  
based in Superior, Wisconsin, USA

**BLADECORE**<sup>™</sup>

**CONNECT**  
WORK TOOLS

**OILQUICK**<sup>®</sup>

**ROCKZONE**  
AMERICAS

**SHEARCORE**<sup>™</sup>