

# ALLU TRANSFORMER D-SERIES.



**ALLU** 

**TRANSFORMER.™**

[allu.net](http://allu.net)

# IT TRANSFORMS...



## YOUR EFFICIENCY

One stop shop process. Screen, crush, aerate, mix and load all in a "one-step operation".



## YOUR PROFITS

Less material to a landfill means less expenditure. Re-use the material on site, so there is no need to purchase virgin material. Recycle and utilize the left-over materials and generate an income from it.



## YOUR GREEN CREDENTIALS

Less material to be transported to the jobsite means a reduction in fuel consumption. Less materials to a landfill and efficient utilization of waste materials supports sustainability.



## YOUR MACHINES

Your excavator, wheel-loader or skid-steer will transform into a multifunctional tool that will screen, crush, aerate, mix, load and pulverize all in a one-step operation - the ALLU Transformer screener crusher.

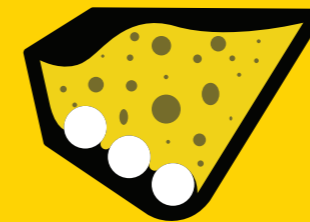
# ALLU TRANSFORMER FEATURES & BENEFITS.

The ALLU Transformer D-series screener buckets are designed for larger processing jobs. Everything from aerating compost, primary on-site screening and processing construction material. This is a bucket which screens, crushes, pulverises, aerates, blends, mixes, separates, feeds and loads materials. And best of all, it transforms the materials you work with. It's more productive, and more profitable.

## HOW IT WORKS.

### PHASE ONE

- Start



### PHASE TWO

- Screening & crushing of material
- Normal drum rotation
- Optimal material flow and circulation
- Approx. 1/2 of full bucket



### PHASE THREE

- Reversed drum rotation
- Approx. 1/4 of full bucket



## STRONG & RELIABLE

- Strongest frame structure on the market
- Strongest power transmission on the market
- Motors placed inside the frame to avoid any damages from the outside
- Fenders protect bearings against dirt
- Lubrication inside the chain boxes ensure long transmission lifetime

## EFFICIENT

- Produces homogenous end product
- High production even with wet materials
- Quick and easy to maintenance
- Screens material without back and forth rotation
- Self cleaning design (TS)

## VERSATILE

- Fits both excavator or wheel loader
- Can be mounted to an excavator both as backhoe and as front shovel
- Handles many different materials - also wet ones
- Changeable wear parts & adapter plates
- Patented construction and details
- Screen, crush, mix, aerate and load in 'one step operation'
- Worldwide sales and service network

---

# APPLICATIONS.

- PROCESSING WASTE MATERIAL
- PIPELINE PADDING
- ASPHALT RECYCLING
- COMPOSTING
- SCREENING TOPSOIL
- SCREENING SOFT MINERALS
- SCREENING MANURE
- PROCESSING DEMOLITION WASTE
- CRUSHING FIELD BARK
- PROCESSING CONTAMINATED SOIL
- CRUSHING PLASTER BOARD
- PROCESSING BUILDING WASTE
- SEPARATING WASTE FROM SOIL
- SCREENING SAND
- SCREENING COMPOST & TOP SOIL
- SLAG TREATMENT
- QUARRY WASTE PROCESSING
- PROCESSING PORCELAIN



# EXAMPLES OF CUSTOMER CASE STUDIES.



## PIPELINE PADDING

**PROBLEM:** ROCKY SOIL  
**JOBSITE:** PIPELINE JOBSITE  
**SIZE:** 250KM (157 MILES)  
**COUNTRY:** USA

**SOLUTION** MATERIAL IS SCREENED ONSITE AND BACKFILLED WITH ALLU TRANSFORMER DIRECTLY INTO THE TRENCH.

**RESULT**

- NO NEED TO PURCHASE FINE SOIL
- NO TRANSPORTATION COSTS
- NO LANDFILL PAYMENTS
- LESS ENVIRONMENTAL CONSUMPTION



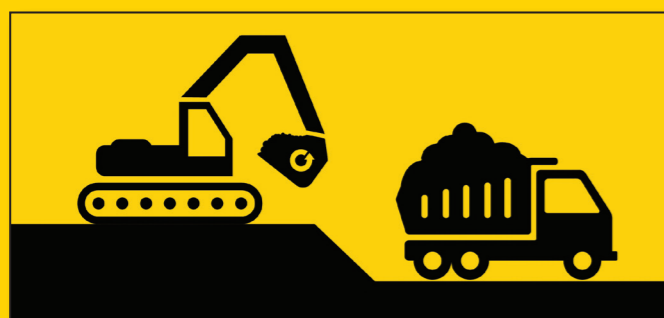
## WASTE RECYCLING

**PROBLEM:** WASTE MATERIAL  
**JOBSITE:** WASTE CENTRE  
**SIZE:** 18 000 T/Y WASTE MATERIAL  
**COUNTRY:** THAILAND

**SOLUTION** PRE-CRUSHING THE WASTE WITH ALLU TRANSFORMER.

**RESULT**

- 50% MORE BIOMASS TO SELL TO THE POWER PLANT
- LESS WASTE MATERIAL TO THE LANDFILL
- LESS ENVIRONMENTAL CONSUMPTION



## CONTAMINATED SOIL

**PROBLEM:** CONTAMINATED SOIL  
**JOBSITE:** WASTE CENTRE  
**SIZE:** 2,5 HECTARES  
**COUNTRY:** FINLAND

**SOLUTION** PRE-TREATING THE CONTAMINATED SOIL WITH ALLU TRANSFORMER. SOIL IS STABILISED INTO A NON-TOXIC FORM.

**RESULT**

- SOIL IS UTILIZED IN EMBANKMENTS AT THE WASTE SITE
- NO NEED FOR WASTE TAX OR LANDFILL PAYMENTS

# ALLU APP.

Transform your efficiency and safety with ALLU App. The ALLU App provides an intelligent digital solution for customers and operators to obtain accurate and timely information regarding safe operations at job sites, thereby maximizing the use of the ALLU equipment.



**YOUR PRODUCTIVITY**

- Notify about the need for maintenance or replacement of wear parts - minimize the downtime
- Real-time guidance for working angle ensures efficiency



**YOUR SAFETY**

- Obtain accurate and timely information regarding safe operations at job sites



**EFFICIENT CUSTOMER SERVICE**

- Receive quick answers to frequently asked questions (FAQs)
- Check the right spare parts and accessories for your product
- Check the warranty information of your product
- Locate your closest ALLU distributor



Search for ALLU on the App Store or Play Store, or scan the QR code to get started.



## ALLU D SERIES SPECIFICATIONS.

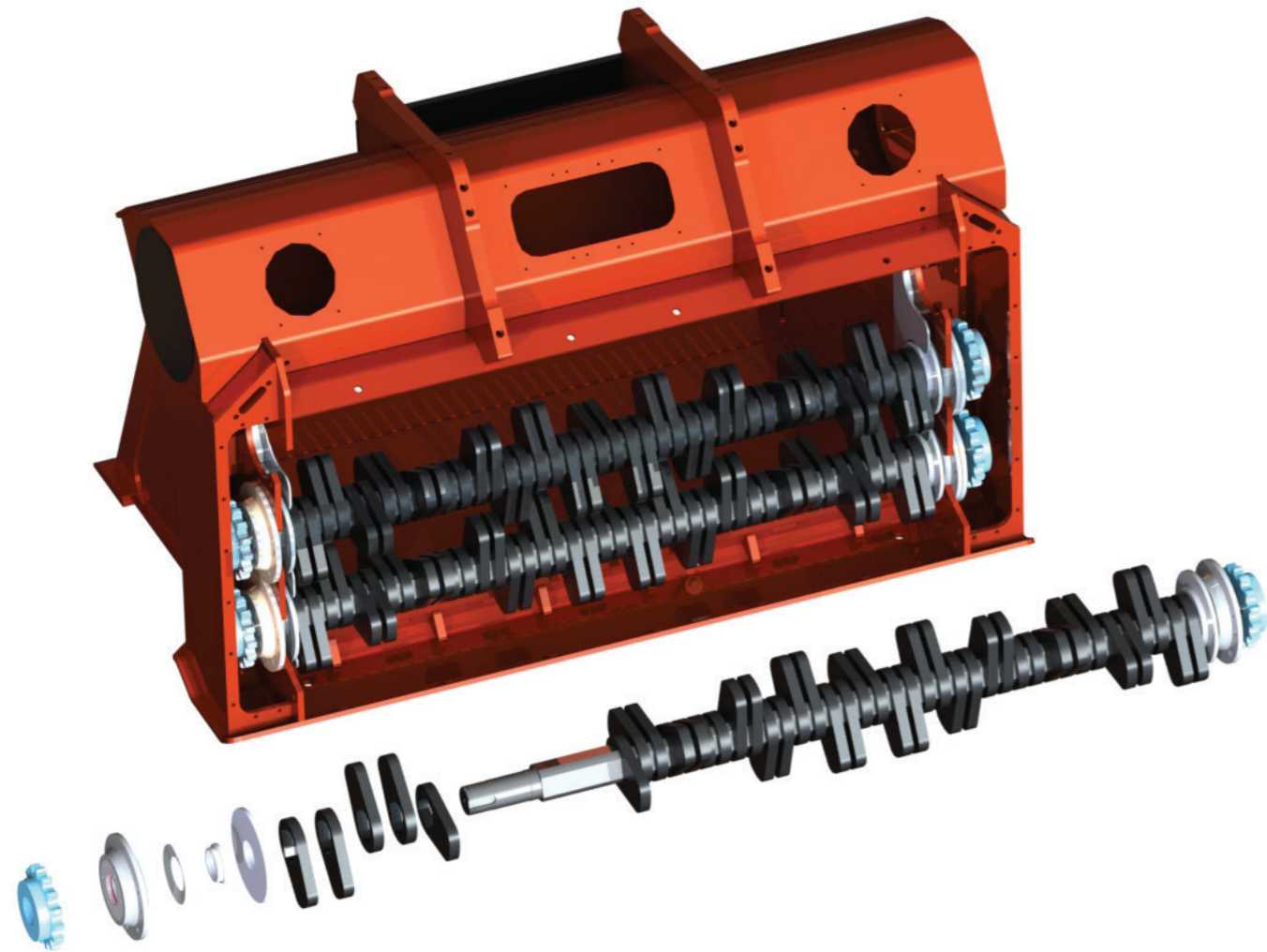
MODEL	EXCAVATOR		WHEEL LOADERS		VOLUME		OIL FLOW		WEIGHT	
	Tn	US Tn	Tn	US Tn	m <sup>3</sup>	cu yd	Lpm	Gpm	Kg	Lbs
DN 2-09	10-28	11.02-30.8	4-14	4.4-15.4	0.4-0.49	0.52-0.64	70-120	18.4-31.7	940	2072
DN 2-12	12-28	13.2-30.8	6-14	6.6-15.4	0.52-0.66	0.68-0.86	70-120	18.4-31.7	1130	2491
DN 2-17	15-28	16.5-30.8	7-14	7.7-15.4	0.76-0.99	0.99-1.29	70-120	18.4-31.7	1400	3086
DN 3-09	12-28	13.2-30.8	6-14	6.6-15.4	0.60-0.75	0.78-0.98	70-120	18.4-31.7	1220	2689
DN 3-12	16-28	17.6-30.8	7-14	7.7-15.4	0.79-1.01	1.03-0.9	95-160	25-42.2	1410	3108
DN 3-17	20-28	22-30.8	7-14	7.7-15.4	1.15-1.53	1.5-2.0	95-160	25-42.2	1760	3880
DS 3-12	16-35	17.6-38.5	8-22	8.8-24.2	0.83-1.04	1.09-1.36	95-160	25-42.2	1610	3549
DS 3-17	20-35	22-38.5	10-22	9.9-24.2	1.22-1.57	1.6-2.05	95-160	25-42.2	2000	4409
DS 3-23	24-35	26.4-38.5	12-22	13.2-24.2	1.61-2.10	2.11-2.75	120-200	31.7-52.8	2520	5555
DS 4-12	20-35	22-38.5	10-22	11-24.2	1.24-1.56	1.62-2.04	95-160	25-42.2	1930	4254
DS 4-17	24-35	26.4-38.5	12-22	13.2-24.2	1.82-2.38	2.38-3.11	120-200	31.7-52.8	2360	5202
DS 4-23	30-35	33-38.5	14-22	15.4-24.2	2.4-3.21	3.14-4.2	190-315	31.7-52.8	3020	6657
DH 3-12	18-45	19.8-49.6	8-30	8.8-33	0.85-1.07	1.11-1.4	140-235	36.9-62	1950	4298
DH 3-17	22-45	24.2-49.6	10-30	11-33	1.25-1.61	1.63-2.11	140-235	36.9-62	2400	5291
DH 3-23	26-45	28.6-49.6	14-30	15.4-33	1.65-2.16	2.16-2.83	140-235	36.9-62	2960	6525
DH 4-12	22-45	24.2-49.6	10-30	11-33	1.26-1.59	1.65-2.08	140-235	36.9-62	2280	5026
DH 4-17	27-45	29.7-49.6	14-30	15.4-33	1.85-2.43	2.42-3.18	140-235	36.9-62	2780	6128
DH 4-23	32-45	35.2-49.6	16-30	17.6-33	2.43-3.27	3.18-4.28	190-315	50.1-83.2	3490	7694
DH 4-27	36-45	39.6-49.6	18-30	19.8-33	3.02-4.12	3.95-5.39	240-400	63.4-105.6	4080	8994

## ALLU TS MODEL SPECIFICATIONS.

MODEL	EXCAVATOR		WHEEL LOADER		VOLUME		OIL FLOW		WEIGHT	
	Tn	US Tn	Tn	US Tn	m <sup>3</sup>	cu yd	Lpm	Gpm	Kg	Lbs
DN 2-12 TS	12-28	13.2-30.8	6-14	6.6-15.4	0.52-0.66	0.68-0.86	90-160	23.8-42.3	1160	2557
DN 2-17 TS	15-28	16.5-30.8	7-14	7.7-15.4	0.76-0.99	0.99-1.29	90-160	23.8-42.3	1420	3130
DN 3-12 TS	16-28	17.6-30.8	7-14	7.7-15.4	0.79-1.01	1.03-1.32	120-200	31.7-52.8	1440	3174
DN 3-17 TS	20-28	22-30.8	9-14	9.9-15.4	1.15-1.53	1.5-2.0	120-200	31.7-52.8	1830	4034
DS 3-12 TS	16-35	17.6-38.5	8-22	8.8-24.2	0.83-1.04	1.09-1.36	120-200	31.7-52.8	1630	3593
DS 3-17 TS	20-35	22-38.5	9-22	9.9-24.2	1.22-1.57	1.6-2.05	120-200	31.7-52.8	2010	4431
DS 3-23 TS	24-35	26.4-38.5	12-22	13.2-24.2	1.61-2.1	2.11-2.75	140-235	36.9-62	2620	5776
DS 4-12 TS	20-35	22-38.5	9-22	9.9-24.2	1.24-1.56	1.62-2.04	120-200	31.7-52.8	1940	4276
DS 4-17 TS	24-35	26.4-38.5	12-22	13.2-24.2	1.82-2.38	2.38-3.11	140-235	36.9-62	2520	5555
DS 4-23 TS	30-35*	33-38.5	14-22	15.4-24.2	2.4-3.21	3.14-4.2	190-315	50.1-83.2	3150	6944
DH 3-12 TS	18-45	19.8-49.6	8-30	8.8-33	0.85-1.07	1.11-1.4	190-315	50.1-83.2	1970	4343
DH 3-17 TS	22-45	24.2-49.6	10-30	11-33	1.25-1.61	1.63-2.11	190-315	50.1-83.2	2460	5423
DH 3-23 TS	26-45	28.6-49.6	14-30	15.4-33	1.65-2.16	2.16-2.83	190-315	50.1-83.2	3020	6657
DH 4-12 TS	22-45	24.2-49.6	10-30	11-33	1.26-1.59	1.65-2.08	190-315	50.1-83.2	2300	5070
DH 4-17 TS	27-45	29.7-49.6	14-30	15.4-33	1.85-2.43	2.42-3.18	190-315	50.1-83.2	2890	6371
DH 4-23 TS	32-45	35.2-49.6	16-30	17.6-33	2.43-3.27	3.18-4.28	190-315	50.1-83.2	3500	7716

# ALLU TRANSFORMER DRUM & TOOL OPTIONS.

## STATIC DRUMS.



## VARIABLE DRUMS.



Currently available for DN 3-12 TS and DN 3-17 TS models

### Benefits of Variable drums

- Enabling a variable drum setup. this mean an individual drum or blades can be changed quicker.
- Allows quicker replacement of fixed TS blades
- No need to open the chain-box when blades are replaced.

## ALLU TS DRUMS.



### TS Screening drum

- changeable blades
- change of fragment size without dismantling drums



### TS Crushing drum

- changeable blades
- change of fragment size without dismantling drums

## ALLU BLADES.



**TS Standard blade**  
For all screening applications.



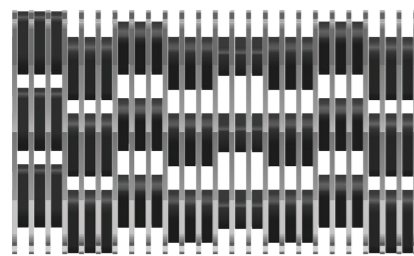
**TS Axe blade**  
For crushing applications.

# ONE ALLU THREE FRAGMENT SIZES.

ALLU TS structure enables three different fragment sizes from the same unit. Fragment size estimation is based on the distance set by the screening comb.

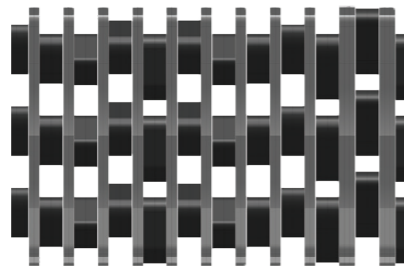
The ALLU TS structure allows you to adapt your bucket for your screening needs quickly and effortlessly giving you the ability to have more versatile processing. The TS structure has been developed with a self-cleaning system allowing for the best possible capacity even with wet material. We call this innovative design a non-clogging system and is available across our entire TS range.

## SINGLE BLADE



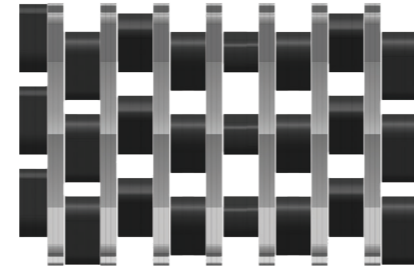
Single blade setup:  
blade sizes 8mm, 16mm, 25mm,  
35mm.

## DOUBLE BLADE



Double blade setup:  
blade sizes 16mm, 32mm,  
50mm, 70mm.

## TRIPLE BLADE



Triple blade setup:  
blade sizes 24mm, 48mm,  
75mm, 105mm.

## DOUBLING

TS 08 / 16  
TS 16 / 32  
TS 25 / 50  
TS 35 / 70



## TRIPLING

TS 08 / 24  
TS 16 / 48  
TS 25 / 75  
TS 35 / 105



## ALLU DRUMS.



Screening and crushing  
XHD 25/40/60

■ changeable blades

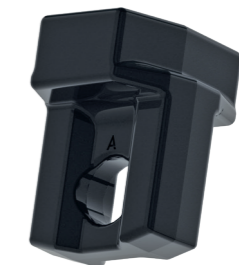
Stabilising, mixing,  
aerating and crushing  
(X75 and X100)

■ changeable blades

## ALLU BLADES.



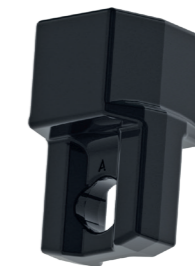
Universal blade 40 XHD  
For most applications and  
materials. Good durability.



Universal blade 60 XHD  
For most applications and  
materials. Good durability.



Long blade 40 XHD  
Special blade for screening  
and aerating compost  
and other soft materials  
to increase capacity.



Long blade 60 XHD  
Special blade for screening  
and aerating compost  
and other soft materials  
to increase capacity.



X blade  
For stabilising, mixing,  
aerating and crushing.  
Suitable for X75 and  
X100 drums.

# ALLU AROUND THE WORLD.

## HEADQUARTERS

### ALLU Finland Oy

Jokimäentie 1

16320 Pennala,

FINLAND

Tel: +358 3 882 140

Fax: +358 3 882 1 440

Email: info@allu.net

## GERMANY

### ALLU Deutschland GmbH

Maschweg 77

DE-49324 Melle

GERMANY

Tel: +49 (0) 5422 92782 - 0

Fax: +49 (0) 5422 92782 - 15

Email: deutschland@allu.net

## FRANCE

### ALLU France S.A.R.L.

180 ZA les Bruottées

21200 VIGNOLES,

FRANCE

Tel: +33 3 80 24 04 34

Fax: +33 3 80 24 04 36

Email: france@allu.net

## NORTH AMERICA

### ALLU Group Inc

25 Kimberly Road, Suite A,

East Brunswick, NJ 08816, USA

Toll Free: 800-939-ALLU (2558)

Tel: +1 (201) 288-2236

Fax: +1 (201) 288-4479

Email: usa@allu.net

## SWEDEN

### ALLU Sverige AB

Stenvretsgatan 1,

SE-749 40 Enköping,

SWEDEN

Tel: +46 (0)171-17 15 17

Email: sverige@allu.net

## CHINA

### ALLU China Co., Ltd

阿陆环保科技（昆山）

有限公司

No.4 Factory, No. 639 Yide

Road, Zhangpu Town 215300

Kunshan, P.R. CHINA

Tel: +86 21 5888 5836

Fax: +86 21 5888 5801

Email: china@allu.net

## ALLU SALES OFFICE MIDDLE EAST

Tel: +968 9885 3091 (Oman) | +614 3499 0368 (Australia)

Email: me@allu.net



**TRANSFORMER.™**

