



EN | DE | FR | ES | IT | PT  
Material Handler | F-Series

# MHL 340



**129 kW** (Diesel, EU-Stage V)  
**128 kW** (Diesel, EU-Stage IIIA)  
**110 kW** (Electric)



**28,4–30,6 t**



**max. 13,7 m**



**FUCHS**<sup>®</sup>  
A TEREX BRAND



### Important notes regarding the load capacities

The lift capacity values are stated in metric tons (t). The pump pressure is 360 bar. In accordance with ISO 10567, the lift capacity values represents 75 % of the static tipping loads or 87% of the hydraulic lifting force (marked °). On solid and level ground the values apply to a swing range of 360°. The (...) values apply in the longitudinal direction of the undercarriage. The values for "not supported" only apply via the steering axle or the locked oscillating axle. The weights of the attached load hoisting equipment (grab, load hook, etc.) must be deducted from the lift capacity values. The working load of the lifting device must be observed. In accordance with the EN 474-5 for object handling application hose rupture valves on the boom and stick cylinders, an overload warning device and the lift capacity table in the cab are required. The machine has to be supported on a level ground for object handling application.

### Consideraciones importantes sobre las cargas

Los valores de carga se indican en toneladas (t). La presión de la bomba es de 360 bar. Según la norma ISO 10567, los valores ascienden al 75 % de la carga de vuelco o al 87 % de la capacidad de elevación hidráulica (marcado en °). En suelos firmes y planos, los valores son válidos para un radio de inclinación de 360°. Los valores (...) son válidos para el sentido longitudinal del carro inferior. Los pesos de los dispositivos de elevación (cuchara, ganchos de carga, etc.) se deducen de los valores de carga. Hay que tener en cuenta la capacidad de carga de los dispositivos de elevación. En cumplimiento de la norma EN 474-5, para ejecutar elevaciones de carga se necesitan válvulas antirrotura de mangueras en el cilindro de elevación y en el balancín, un dispositivo de aviso de sobrecarga y la tabla de capacidad de carga en la cabina. Realizar las elevaciones de carga con la máquina apoyada.

### Wichtige Erläuterungen zu den Traglasten

Die Traglastwerte sind in Tonnen (t) angegeben. Der Pumpendruck beträgt 360 bar. Gemäß ISO 10567 betragen die Werte 75 % der statischen Kipplast oder 87 % der hydraulischen Hubkraft (gekennzeichnet mit °). Auf festem und ebenem Untergrund gelten die Werte für einen Drehbereich von 360°. Die (...) -Werte gelten in Längsrichtung des Unterwagens. Gewichte angebaute Lastaufnahmemittel (Greifer, Lasthaken, usw.) sind von den Traglastwerten abzuziehen. Die zulässige Traglast des Lastaufnahmemittels ist zu beachten. Für den Hebezeugbetrieb sind entsprechend der Norm EN 474-5 Rohrbruchventile an den Hub- und Stielzylindern, eine Überlastwarnrichtung und die Traglasttabelle in der Kabine erforderlich. Den Hebezeugbetrieb nur mit der eben abgestützten Maschine durchführen.

### Spiegazioni importanti sui carichi massimi

I valori dei carichi massimi sono indicati in tonnellate (t). La pressione della pompa è di 360 bar. Conformemente alla norma ISO 10567, questi valori corrispondono al 75 % del carico di ribaltamento statico oppure all'87 % della forza di sollevamento idraulica (contrassegnati con °). Su una superficie di terreno stabile e piana, i valori valgono per un'area di rotazione di 360°. I valori indicati in parentesi (...) si intendono in direzione longitudinale del carrello. I carichi indicati sono applicati al gancio senza attrezzature (benna mordente, gancio di carico ecc.). Il peso dell'attrezzatura va detratto dai valori dei carichi massimi ammessi. La capacità di carico massima ammissibile per la macchina deve essere rispettata. Per l'impiego come apparecchio di sollevamento, conformemente alla norma EN 474-5 è necessario prevedere valvole di arresto automatico sui cilindri di sollevamento e sui cilindri dell'avabraccio, mentre la cabina deve essere provvista di dispositivo di allarme per sovraccarico e tabella dei carichi. Le operazioni di sollevamento devono svolgersi solo a macchina stabilizzata.

### Précisions importantes sur les charges

Les charges sont indiquées en tonnes (t). La pression de la pompe est de 360 bar. Conformément à la norme ISO 10567, ces valeurs correspondent à 75 % de la charge statique de basculement ou à 87 % de la force de levage hydraulique (signalées par °). Ces valeurs sont valables pour une plage de rotation de 360° sur un sol ferme et de niveau. Les valeurs entre parenthèses (...) sont valables dans le sens longitudinal du châssis. Le poids des accessoires de levage fixes (grappin, crochet, etc.) doit être soustrait des valeurs de charges admissibles. La charge admissible du moyen de charge doit être observée. Pour le mode levage, il est obligatoire d'avoir des clapets de sécurité sur les vérins de levage et de balancier, ainsi qu'un avertisseur de surcharge et le tableau des charges dans la cabine, conformément à la norme EN 474-5. Le mode levage ne doit être utilisé qu'avec la machine étayée sur un sol de niveau.

### Explicações importantes sobre as capacidades de carga

Os valores de capacidade de carga são indicados em toneladas (t). A pressão da bomba é de 360 bar. Segundo a norma ISO 10567, os valores perfazem 75 % da carga basculante estática ou 87% da força de elevação hidráulica (identificados por °). Em superfícies fixas e niveladas, aplicam-se os valores para uma área de oscilação de 360°. Os valores (...) aplicam-se no sentido longitudinal do chassi. Os pesos dos equipamentos de elevação montados (garra, gancho de suspensão, etc) devem ser calculados com base nos valores da capacidade de carga. É necessário ter em conta a capacidade de carga admissível do equipamento de elevação. Para o guincho, são necessárias, de acordo com a norma EN 474-5, válvulas anti-ruptura de tubagens no macaco hidráulico e nos cilindros da haste, um dispositivo de aviso de sobrecarga e a tabela de capacidade de carga na cabina. Executar o guincho somente com a máquina assente em uma superfície nivelada.

| KEY | LEGENDE                            | LÉGENDE                        | LEJENDA                           | LEGENDA                         | LEGENDA                       |                                 |
|-----|------------------------------------|--------------------------------|-----------------------------------|---------------------------------|-------------------------------|---------------------------------|
|     | Reach                              | Ausladung                      | Portée                            | Alcance                         | Sbraccio                      | Alcance                         |
|     | Engine power                       | Motorleistung                  | Puissance du moteur               | Potencia del motor              | Potenza motore                | Potência do motor               |
|     | Service weight without attachments | Dienstgewicht ohne Anbaugeräte | Poids de service sans équipements | Peso en servicio sin accesorios | Peso operativo senza attrezzi | Peso operacional sem acessórios |
|     | Center of rotation                 | Drehmitte                      | Centre de rotation                | Centro de rotación              | Centro rotante                | Centro de rotação               |
|     | Height                             | Höhe                           | Hauteur                           | Altura                          | Altezza                       | Altura                          |
|     | Undercarriage                      | Unterwagen                     | Châssis                           | Carro inferior                  | Carrello                      | Chassi                          |
|     | Not supported                      | Nicht abgestützt               | Non stabilisé                     | No apoyado                      | Non puntellato                | Não apoiado                     |
|     | 4-point supported                  | 4-Punkt abgestützt             | Appuyé sur 4 stabilisateurs       | Apoyado en 4 puntos             | Sostegno a 4 punti            | Apoiado em 4 pontos             |

| Reach  | Rotation | 6 m         |          |             | 7,5 m    |            | 9 m      |  |
|--------|----------|-------------|----------|-------------|----------|------------|----------|--|
|        |          | Height      | Rotation | Height      | Rotation | Height     | Rotation |  |
| 10,5 m |          | (5,2)       |          | (3,6)       |          |            |          |  |
|        |          | 5,6° (5,6°) |          | 5,6° (5,6°) |          |            |          |  |
|        |          | 5,6° (5,6°) |          |             |          |            |          |  |
| 9 m    |          | (5,3)       |          | (3,6)       |          |            |          |  |
|        |          | 6,3° (6,3°) |          | 5,6° (5,6°) |          |            |          |  |
|        |          | 6,3° (6,3°) |          | 4,7 (5,6°)  |          |            |          |  |
| 7,5 m  |          | (5,2)       |          | (3,7)       |          | (2,7)      |          |  |
|        |          | 6,3° (6,3°) |          | 5,7° (5,7°) |          | 4,2 (4,9°) |          |  |
|        |          | 6,3° (6,3°) |          | 4,7 (5,7°)  |          | 3,5 (4,9°) |          |  |

## TECHNICAL DATA

### OPERATING WEIGHT WITHOUT ATTACHMENTS

|                     |               |
|---------------------|---------------|
| <b>MHL340 F</b>     | 28.4 t–30.6 t |
| <b>MHL340 F FQC</b> | 28.6–29.8 t   |

### DIESEL ENGINE

|                                  | EU Stage V / U.S. Tier 4   | EU Stage IIIA / U.S. Tier 3 *   |
|----------------------------------|--|---|
| <b>Manufacturer and model</b>    | Deutz 6.1 L6   | Deutz TCD2012 L06 2V  |
| <b>Design</b>                    | 6-cylinder inline  | 6-cylinder inline   |
| <b>Functionality</b>             | 4-cycle diesel, common rail direct injection, turbocharged with inter-cooler, controlled exhaust gas recirculation, diesel particulate filter with continuous regeneration and SCR catalytic converter | 4-cycle diesel, common rail direct injection, turbocharged with intercooler |
| <b>Engine power</b>              | 129 kW   | 128 kW  |
| <b>Rated speed</b>               | 2000 rpm   | 2000 rpm  |
| <b>Displacement</b>              | 6.1 l  | 6.1 l   |
| <b>Cooling system</b>            | Water and charge air cooling with temperature controlled fan speed   | Water and charge air cooling with temperature controlled fan speed          |
| <b>Exhaust emission standard</b> | EU Stage V / U.S. Tier 4   | EU Stage IIIA / U.S. Tier 3 *   |
| <b>Fuel tank</b>                 | 337 l Diesel   | 337 l Diesel  |
| <b>DEF / Urea tank</b>           | 32 l AdBlue  | ■   |

### ELECTRIC MOTOR

|                             |  |
|-----------------------------|--|
| <b>Power</b>                | 110 kW                                     |
| <b>Total connected load</b> | 143 kW                                     |
| <b>Motor start</b>          | Via soft start                             |
| <b>Optional cable reel</b>  | Up to 50 metres (other lengths on request) |

### ELECTRICAL SYSTEM

|                           |   |
|---------------------------|---|
| <b>Alternator</b>         | 28 V / 100 A  |
| <b>Operating voltage</b>  | 24 V  |
| <b>Battery</b>            | 2 × 12 V / 110 Ah / 750 A (in accordance with EN standards)         |
| <b>Lighting set</b>       | 2 × LED headlamps, turn indicators and tail lights                  |
| <b>Optional equipment</b> | 13 kW or 17 kW DC generator with controls and insulation monitoring |

### TRAVEL DRIVE

|   |          |
|---|----------|
| Hydrostatic travel drive via infinitely variable axial piston motor with directly mounted travel brake valve, two-speed manual gearshift, 4-wheel drive |          |
| <b>Travel speed 1<sup>st</sup> gear</b>   | 5 kph    |
| <b>Travel speed 2<sup>nd</sup> gear</b>   | 18 kph   |
| <b>Gradeability</b>   | max. 40% |
| <b>Turning radius</b>   | 8.3 m    |

### SLEWING DRIVE

|                                  |   |
|----------------------------------|---|
| <b>Slewing ring</b>              | Internally geared, double-row ball turning ring         |
| <b>Drive</b>                     | 2-stage planetary gear with integrated multi-disc brake |
| <b>Uppercarriage swing speed</b> | 0–7.5 rpm variable                                      |
| <b>Slewing lock</b>              | Electrically operated                                   |

### UNDERCARRIAGE

|                   |  |
|-------------------|--|
| <b>Front axle</b> | Rigid axle with integral drum brake, planetary drive, max. steering angle: 27°             |
| <b>Rear axle</b>  | Oscillating axle with integral drum brake and selectable oscillation lock, planetary drive |
| <b>Outrigger</b>  | 4-point stabilizer system  |
| <b>Tires</b>      | 10.00–20 solid rubber with intermediate rings for MHL340F, 12.00–20 for MHL340F FQC        |

### BRAKE SYSTEM

|                      |   |
|----------------------|---|
| <b>Service brake</b> | Hydraulic single-circuit braking system acting on all four wheel pairs                  |
| <b>Parking brake</b> | Electrically operated disc brake on travel gearbox, acting on both front and rear axles |

### HYDRAULIC SYSTEM

|                           |                    |
|---------------------------|--------------------|
| <b>Pump delivery rate</b> | max. 2 × 330 lpm   |
| <b>Operating pressure</b> | max. 320 / 360 bar |
| <b>Hydraulic oil tank</b> | 372 l              |

### OPERATOR CAB

|   |   |   |
|---|---|---|
| <b>Cab</b>                                  | Infinitely variable hydraulic height-adjustment with eye level up to 5.60 m above ground.<br>Sound-deadened, ample thermal panoramic glass windows, windshield with pull-down sunblind, viewing window on cab roof, sliding window in cab door, sliding door  |   |
| <b>Climate control</b>                      | Automatic air-conditioning. Infinitely variable heating with 8-speed fan, 10 adjustable air nozzles, including 4 in the roof lining, 3 defroster nozzles  |   |
| <b>Operator's seat</b>                      | Air-sprung comfort seat with integrated headrest, safety belt, and lower lumbar support, optional seat heating. Allows comfortable working by offering universal adjustment possibilities of the seat position, the seat incline, and the position of the seat cushion in relation to the armrests and joysticks  |   |
| <b>Monitoring</b>                           | Ergonomic layout, anti-glare instrumentation. Multifunction display, automatic monitoring and recording of abnormal operating conditions (including all hydraulic oil filters, hydraulic oil temperature (cold/hot), coolant temperature and charge air temperature), diesel particulate filter load, visual and audible warning indication with shutdown of pilot controls/engine power reduction. Diagnosis of individual sensors possible via the multifunction display. Rear view camera and side view camera |   |
|   | <b>EU Stage V / U.S. Tier 4</b>   | <b>EU Stage IIIA / U.S. Tier 3 *</b>  |
| <b>Noise level</b>                          | Sound power level (ambience) L <sub>WA</sub> 99.5 dB(A) (metered) acc. to directive 2000/14/EG L <sub>WA</sub> 101 dB(A) (guaranteed) acc. to directive 2000/14/EG<br>Sound pressure level (inside the cabin) acc. to standard ISO 6396 L <sub>PA</sub> 70 dB(A)  | Sound power level (ambience) L <sub>WA</sub> 101.7 dB(A) (metered) acc. to directive 2000/14/EG L <sub>WA</sub> 102 dB(A) (guaranteed) acc. to directive 2000/14/EG<br>Sound pressure level (inside the cabin) acc. to standard ISO 6396 L <sub>PA</sub> 70 dB(A) |
| <b>Vibrations</b>                           | Weighted r.m.s. value of acceleration of upper limbs under 2.5 m/s <sup>2</sup> (98 in/s <sup>2</sup> )<br>Weighted effective value of acceleration for the seat and feet under 0.5 m/s <sup>2</sup> (20 in/s <sup>2</sup> )  |   |
| Certified in accordance with CE regulations |   |   |

## TECHNISCHE DATEN

### DIENTSGEWICHT OHNE ANBAUGERÄT

|                     |             |
|---------------------|-------------|
| <b>MHL340 F</b>     | 28,4–30,6 t |
| <b>MHL340 F FQC</b> | 28,6–29,8 t |

### DIESELMOTOR

|                           | EU Stufe V / U.S. Tier 4  | EU Stufe IIIA / U.S. Tier 3 *   |
|---------------------------|---|---|
| <b>Hersteller und Typ</b> | Deutz TCD 6.1 L6  | Deutz TCD2012 L06 2V  |
| <b>Bauart</b>             | 6-Zylinder-Reihenmotor  | 6-Zylinder-Reihenmotor  |
| <b>Funktionsweise</b>     | 4-Takt-Diesel, Common-Rail-Direkteinspritzung, Turbolader mit Ladeluftkühlung, geregelte Abgasrückführung, Dieselpartikelfilter mit kontinuierlicher Regeneration und SCR-Katalysator | 4-Takt-Diesel, Common-Rail-Direkteinspritzung, Turbolader mit Ladeluftkühlung |
| <b>Motorleistung</b>      | 129 kW  | 128 kW  |
| <b>Nennrehzahl</b>        | 2000 min <sup>-1</sup>  | 2000 min <sup>-1</sup>  |
| <b>Hubraum</b>            | 6,1 l   | 6,1 l   |
| <b>Kühlsystem</b>         | Wasser- / Ladeluftkühlung mit temperaturgeregelter Lüfterdrehzahl   | Wasser- / Ladeluftkühlung mit temperaturgeregelter Lüfterdrehzahl             |
| <b>Abgasnorm</b>          | EU Stufe V / U.S. Tier 4  | EU Stufe IIIA / U.S. Tier 3 *   |
| <b>Kraftstofftank</b>     | 337 l Diesel  | 337 l Diesel  |
| <b>Urea Tank</b>          | 32 l Ad Blue  | ■   |

### ELEKTROMOTOR

|                                 |   |
|---------------------------------|---|
| <b>Leistung</b>                 | 110 kW                                    |
| <b>Gesamt-Anschlussleistung</b> | 143 kW                                    |
| <b>Motoranlauf</b>              | Über Sanftstart                           |
| <b>Optional Kabeltrommel</b>    | Bis 50 Meter (weitere Längen auf Anfrage) |

### ELEKTRISCHE ANLAGE

|                           |  |
|---------------------------|--|
| <b>Lichtmaschine</b>      | 28 V / 100 A   |
| <b>Betriebsspannung</b>   | 24 V   |
| <b>Batterie</b>           | 2 × 12 V / 110 Ah / 750 A (nach EN)  |
| <b>Beleuchtungsanlage</b> | 2 × LED-Scheinwerfer an der Maschinenfront, Heckbegrenzungs- und Blinkerleuchten |
| <b>Option</b>             | 13 kW oder 17 kW Gleichstromgenerator mit Steuerung und Isolationsüberwachung    |

### FAHRANTRIEB

|   |              |
|---|--------------|
| Hydrostatischer Fahrtrieb über stufenlos geregelten Axialkolbenmotor mit direkt angebaute Fahrbremsventil, 2-Gang-Schaltgetriebe, Allradantrieb |              |
| <b>Fahrgeschwindigkeit 1. Gang</b>  | max. 5 km/h  |
| <b>Fahrgeschwindigkeit 2. Gang</b>  | max. 18 km/h |
| <b>Steigfähigkeit</b>   | max. 40 %    |
| <b>Wenderadius</b>  | 8,3 m        |

### SCHWENKANTRIEB

|                           |   |
|---------------------------|---|
| <b>Drehkranz</b>          | Innenverzählter, doppelreihiger Kugeldrehkranz              |
| <b>Antrieb</b>            | 2-stufiges Planetengetriebe mit integrierter Lamellenbremse |
| <b>Oberwagendrehzahl</b>  | 0–7,5 min <sup>-1</sup> stufenlos                           |
| <b>Schwenkarretierung</b> | Elektrisch betätigt   |

### UNTERWAGEN

|                    |  |
|--------------------|--|
| <b>Vorderachse</b> | Planetentriebachse mit integrierter Trommelbremse, starr gelagert, max. Lenkeinschlag 27°                |
| <b>Hinterachse</b> | Planetentriebachse mit integrierter Trommelbremse, pendelnd gelagert mit zuschaltbarer Pendelblockierung |
| <b>Abstützung</b>  | 4-Punkt-Abstützung   |
| <b>Bereifung</b>   | Vollgummibereifung mit Zwischenringen, 10.00–20 für MHL340F, 12.00–20 für MHL340 F FQC                   |

### BREMSEN

|                        |  |
|------------------------|--|
| <b>Betriebsbremse</b>  | Hydraulisch betätigtes Einkreisbremssystem auf alle vier Radpaare wirkend    |
| <b>Feststellbremse</b> | Elektrisch betätigte Scheibenbremse am Fahrgetriebe auf beide Achsen wirkend |

### HYDRAULISCHE ANLAGE

|                          |               |
|--------------------------|---------------|
| <b>Max. Fördermengen</b> | 2 × 330 l/min |
| <b>Max. Arbeitsdruck</b> | 320 / 360 bar |
| <b>Hydrauliköltank</b>   | 372 l         |

### FAHRERKABINE

|                                    |  |   |
|------------------------------------|--|---|
| <b>Kabine</b>                      | Hydraulisch stufenlos hochfahrbar bis auf eine Sichthöhe von 5,60 m<br>Schallgedämmt, wärmeschutzverglaste Panoramafenster für beste Rundumsicht, Frontscheibe mit Rolljalousie, Sichtfenster im Kabinendach, Schiebefenster in Kabinentür, Schiebetur   |   |
| <b>Klimatisierung</b>              | Klimaautomatik, Warmwasserheizung mit stufenloser Temperatureinstellung und 8-stufigem Gebläse, 10 einstellbare Lüftdüsen, davon 4 im Dachhimmel, 3 Defrosterdüsen   |   |
| <b>Fahrersitz</b>                  | Luftfederter Komfortsitz mit integrierter Kopfstütze, Sicherheitsgurt und Lendenwirbelstütze, auf Wunsch Sitzheizung. Ermöglicht ein ermüdungsfreies Arbeiten durch universelle Verstellmöglichkeiten der Sitzposition, der Sitzneigung sowie der Anordnung des Sitzpolsters zu den Armstützen und den mitschwingenden Joysticks   |   |
| <b>Überwachung</b>                 | Ergonomisch angeordnete, blendfreie Instrumentierung, Multifunktionsdisplay, automatische Überwachung und Speicherung von abweichenden Betriebszuständen (z. B. alle Hydraulikölfiler, Hydrauliköltemperatur kalt/heiß, Kühlflüssigkeitstemperatur und Ladelufttemperatur, Beladung Dieselpartikelfilter), optische und akustische Warnung bis zur Abschaltung der Vorsteuerung bzw. Motorleistungsreduzierung. Diagnosemöglichkeit der einzelnen Sensoren über das Multifunktionsdisplay, Rückfahrkamera und Seitenkamera |   |
|                                    | <b>EU Stufe V / U.S. Tier 4</b>  | <b>EU Stufe IIIA / U.S. Tier 3 *</b>  |
| <b>Schallpegel</b>                 | Schallleistungspegel (Außenbereich) L <sub>WA</sub> 99,5 dB(A) (gemessen) nach Richtlinie 2000/14/EG L <sub>WA</sub> 101 dB(A) (garantiert) nach Richtlinie 2000/14/EG<br>Schallleistungspegel (im Inneren der Kabine) nach Norm ISO 6396 L <sub>PA</sub> 70 dB(A)   | Schallleistungspegel (Außenbereich) L <sub>WA</sub> 101,7 dB(A) (gemessen) nach Richtlinie 2000/14/EG L <sub>WA</sub> 102 dB(A) (garantiert) nach Richtlinie 2000/14/EG<br>Schallleistungspegel (im Inneren der Kabine) nach Norm ISO 6396 L <sub>PA</sub> 70 dB(A) |
| <b>Vibrationen</b>                 | Gewichteter Effektivwert der Beschleunigung der oberen Gliedmaßen unter 2,5 m/s <sup>2</sup> (98 in/s <sup>2</sup> )<br>Gewichteter Effektivwert der Beschleunigung für Sitzfläche und Füße unter 0,5 m/s <sup>2</sup> (20 in/s <sup>2</sup> )   |   |
| Zertifizierung nach CE-Richtlinien |  |   |
| Freiwillige DGUV Baumusterprüfung  |  |   |

\* for low-regulated markets

\* für niedrig regulierte Märkte

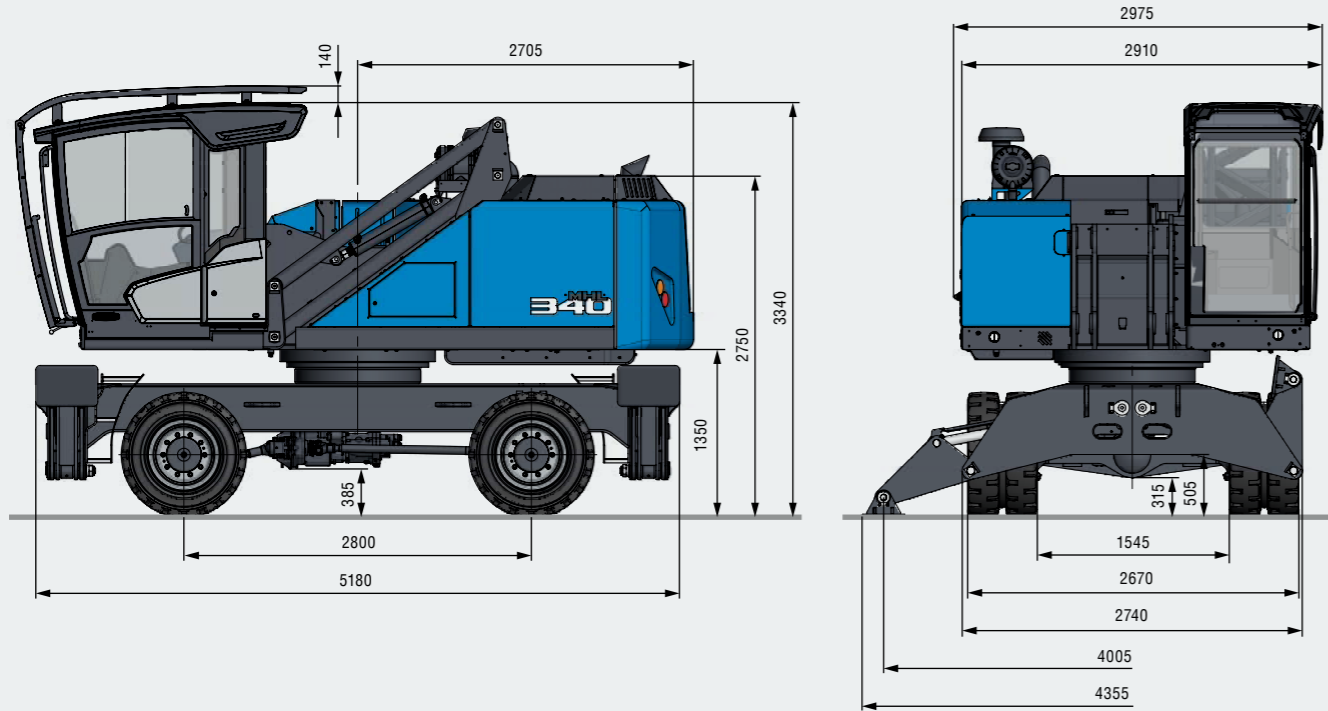




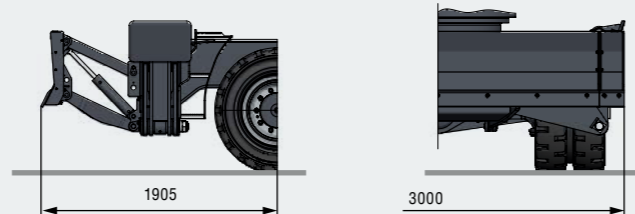


**DIMENSIONS | ABMESSUNGEN | DIMENSIONS | DIMENSIONES | DIMENSIONI | DIMENSÕES [mm]**

4-point stabilizers | 4-Punkt-Abstützung | 4 stabilisateurs | Apoyo de 4 puntos | Sostegno a 4 punti | Apoio em 4 pontos

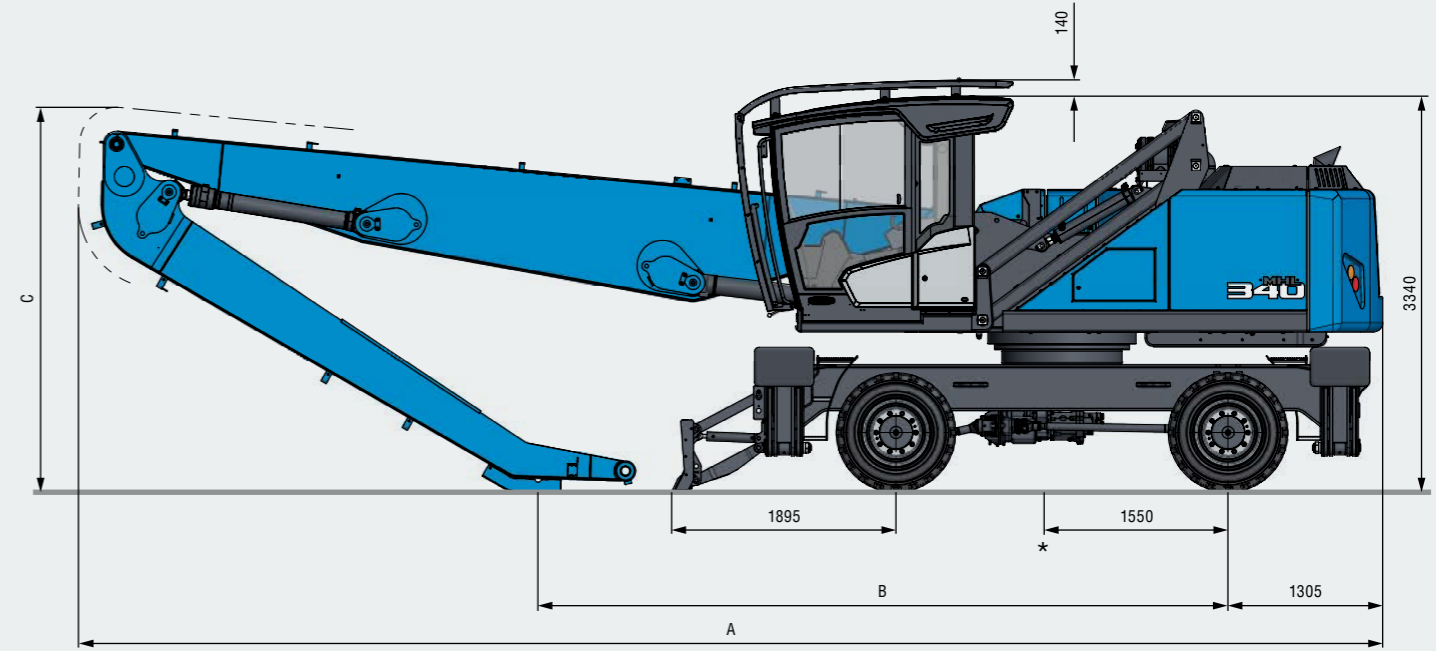


Dozer blade in addition to 4-point stabilizers  
 Räumschild zusätzlich zur 4-Punkt-Abstützung  
 Lame de remblayage en complément aux 4 stabilisateurs  
 Pala adicional al apoyo de 4 puntos  
 Lama livellatrice accessoria al sostegno a 4 punti  
 Lâmina para além do apoio em 4 pontos



**TRANSPORT DIMENSIONS | TRANSPORTABMESSUNGEN | DIMENSIONS DE TRANSPORT [mm]**

**DIMENSIONES DE TRANSPORTES | DIMENSIONI DE TRASPORTO | DIMENSÕES DE TRANSPORTE [mm]**



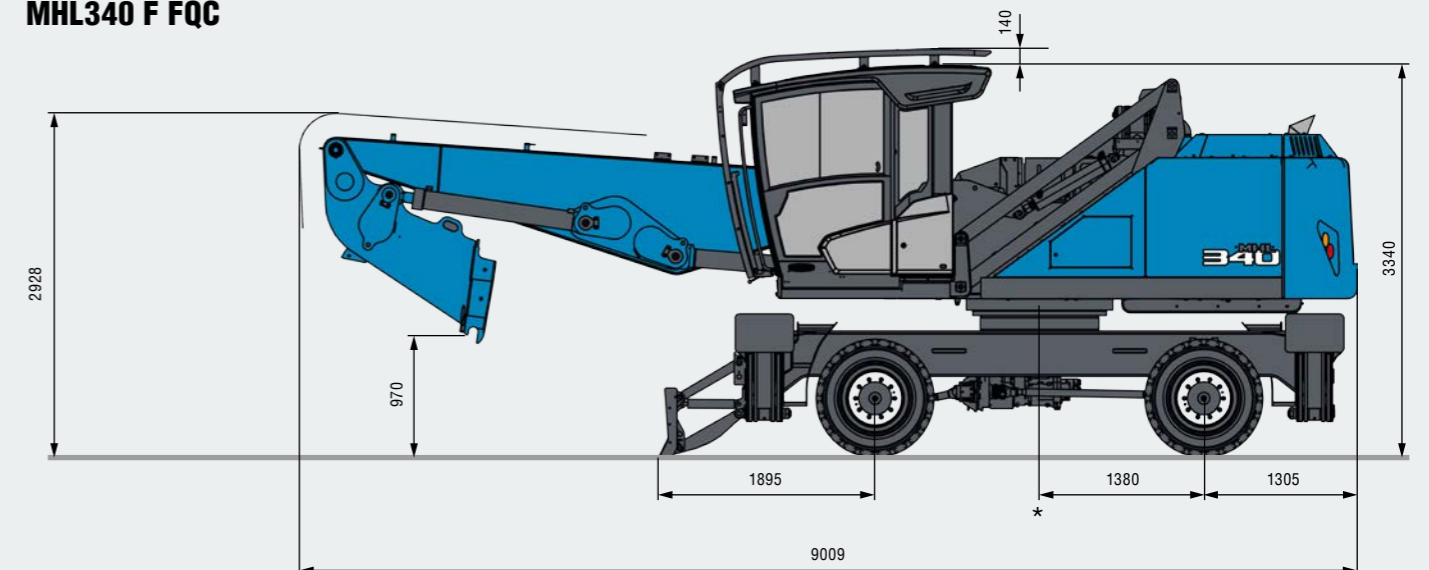
Transport position with dozer blade; undercarriage rotated by 180°  
 Transportstellung mit Räumschild; Unterwagen um 180° gedreht  
 Position de transport avec lame de remblayage ; châssis tourné de 180°  
 Posición de transporte con pala; carro inferior girado 180°  
 Posizione di trasporto con lama livellatrice, carrello ruotato di 180°  
 Posição de transporte com lâmina; chassi com rotação a 180°

\* Average center of gravity in transport position  
 Gemittelte Schwerpunktlage in Transportstellung  
 Position moyenne du centre de gravité en position de transport  
 Centro de gravedad medio en la posición de transporte  
 Punto medio del baricentro in posizione di trasporto  
 Centro de gravidade calculado na posição de transporte

|   | 12,2 m** | 12,6 m   | 13,7 m   |
|---|----------|----------|----------|
| A | 11200 mm | 11000 mm | 11005 mm |
| B | 6009 mm  | 5820 mm  | 4800 mm  |
| C | 3111 mm  | 3250 mm  | 3085 mm  |

\*\* Multi-purpose stick | Mehrzweckstiel | Balancier à usage multiple | Barra de usos múltiples | Avambraccio universale | Balanceiro multiuso

**MHL340 F FQC**

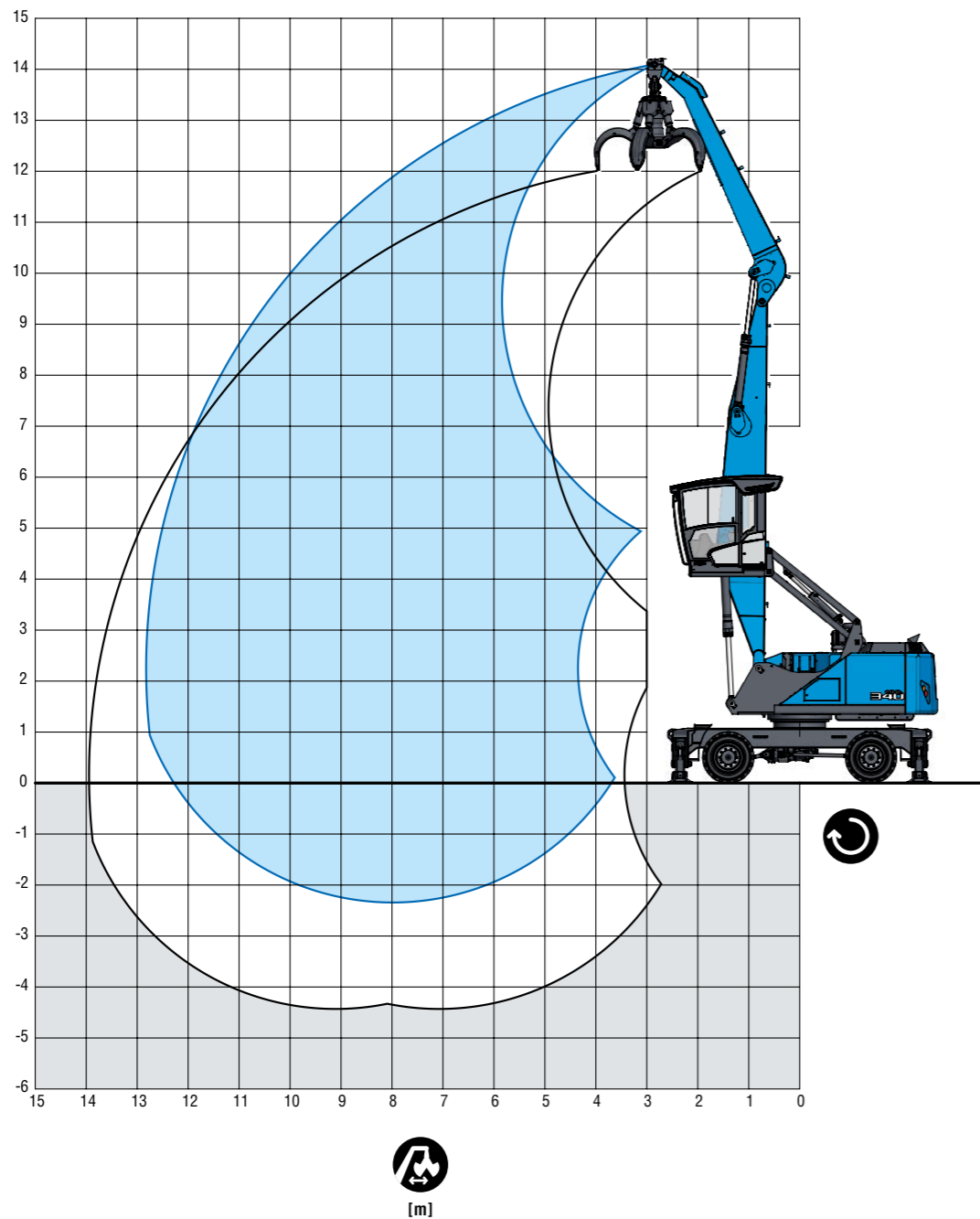




12,6 m

With dipper stick | Mit Ladestiel | Avec balancier  
Con balancín | Con avambraccio industriale | Com braço de carga

| LOADING EQUIPMENT | LADEEINRICHTUNG    | ÉQUIPEMENT CHARGEUR    | EQUIPO DE CARGA | PALA CARICATRICE        | EQUIPAMENTO DE CARGA       |                    |
|-------------------|--------------------|------------------------|-----------------|-------------------------|----------------------------|--------------------|
| Boom              | Ausleger           | Flèche de type caisson | Pluma tipo caja | Braccio                 | Lança                      | 7,2 m              |
| Dipper stick      | Ladestiel          | Balancier              | Balancín        | Avambraccio industriale | Braço de carga             | 5,1 m              |
| Cactus grab       | Mehrschalengreifer | Grappin cactus         | Pulpo           | Polipo multivalve       | Garra de abertura de poços | 0,6 m <sup>3</sup> |



Lifting capacity | Traglast | Capacité de charge | Capacidad de carga | Capacità di carico | Capacidade de carga

|        |  | 4,5 m                    | 6 m                     | 7,5 m                 | 9 m                   | 10,5 m                | 12 m                      |
|--------|--|--------------------------|-------------------------|-----------------------|-----------------------|-----------------------|---------------------------|
| 13,5 m |  | (6,3°)<br>6,3° (6,3°)    |                         |                       |                       |                       |                           |
| 12 m   |  |                          | (6,6°)<br>6,6° (6,6°)   | (4,7°)<br>4,7° (4,7°) |                       |                       |                           |
| 10,5 m |  |                          | (7,5°)<br>7,5° (7,5°)   | (5,6°)<br>6,5° (6,5°) | (4,1°)<br>4,7° (4,7°) |                       |                           |
| 9 m    |  |                          | (8,0°)<br>8,0° (8,0°)   | (5,7°)<br>7,5° (7,5°) | (4,2°)<br>6,3° (6,3°) | (3,2°)<br>4,3° (4,3°) |                           |
| 7,5 m  |  |                          | (8,0°)<br>8,7° (8,7°)   | (5,6°)<br>7,7° (7,7°) | (4,1°)<br>6,3 (6,6°)  | (3,2°)<br>4,9 (5,6°)  |                           |
| 6 m    |  | (9,3°)<br>9,3° (9,3°)    | (7,7°)<br>9,6° (9,6°)   | (5,4°)<br>7,9° (7,9°) | (4,0°)<br>6,2 (6,8°)  | (3,1°)<br>4,8 (5,8°)  | (2,5°)<br>3,7 (4,1°)      |
| 4,5 m  |  | (11,3°)<br>14,1° (14,1°) | (7,2°)<br>10,4° (10,4°) | (5,1°)<br>8,0 (8,3°)  | (3,9°)<br>6,0 (6,9°)  | (3,0°)<br>4,7 (5,9)   | (2,4°)<br>3,8 (4,8)       |
| 3      |  | (10,0°)<br>15,8° (15,8°) | (6,6°)<br>10,7 (11,1°)  | (4,8°)<br>7,6 (8,6°)  | (3,7°)<br>5,8 (7,0°)  | (2,9°)<br>4,6 (5,7)   | (2,4°)<br>3,8 (4,7)       |
| 1,5    |  | (5,4°)<br>5,4° (5,4°)    | (6,1°)<br>10,2 (11,3°)  | (4,5°)<br>7,3 (8,6°)  | (3,5°)<br>5,6 (6,9°)  | (2,8°)<br>4,5 (5,6)   | (2,3°)<br>3,7 (4,5°)      |
| 0 m    |  | (4,8°)<br>4,8° (4,8°)    | (5,8°)<br>9,9 (10,6°)   | (4,3°)<br>7,1 (8,2°)  | (3,4°)<br>5,5 (6,6°)  | (2,8°)<br>4,4 (5,2°)  | (2,3°)<br>3,7 (3,9°)      |
| -1,5 m |  |                          | (5,7°)<br>9,1° (9,1°)   | (4,2°)<br>7,0 (7,3°)  | (3,3°)<br>5,4 (5,8°)  | (2,7°)<br>4,4 (4,5°)  |                           |
|        |  |                          |                         |                       |                       |                       | <b>max.   máx. 12,8 m</b> |
| 2,3 m  |  |                          |                         |                       |                       |                       | (2,1°)<br>3,2° (3,2°)     |



Important notes regarding the load capacities → Page 03 | Wichtige Erläuterungen zu den Traglasten → Seite 03 | Précisions importantes sur les charges → Page 03  
Consideraciones importantes sobre las cargas → Página 03 | Spiegazioni importanti sui carichi massimi → Pagina 03 | Explicações importantes sobre as capacidades de carga → Página 03

| RECOMMENDED ATTACHMENTS              | EMPFOHLENE ANBAUGERÄTE  | ÉQUIPEMENTS RECOMMANDÉS          | ACCESORIOS RECOMENDADOS              | ATTREZZI CONSIGLIATI                           | ACESSÓRIOS RECOMENDADOS                 |
|--------------------------------------|-------------------------|----------------------------------|--------------------------------------|--|---|
| Recommended attachments upon request | Anbaugeräte auf Anfrage | Grappins recommandés sur demande | Recomendaciones de pulpos a petición | Consigli per la scelta della benna a richiesta | Recomendações sobre garras sob consulta |

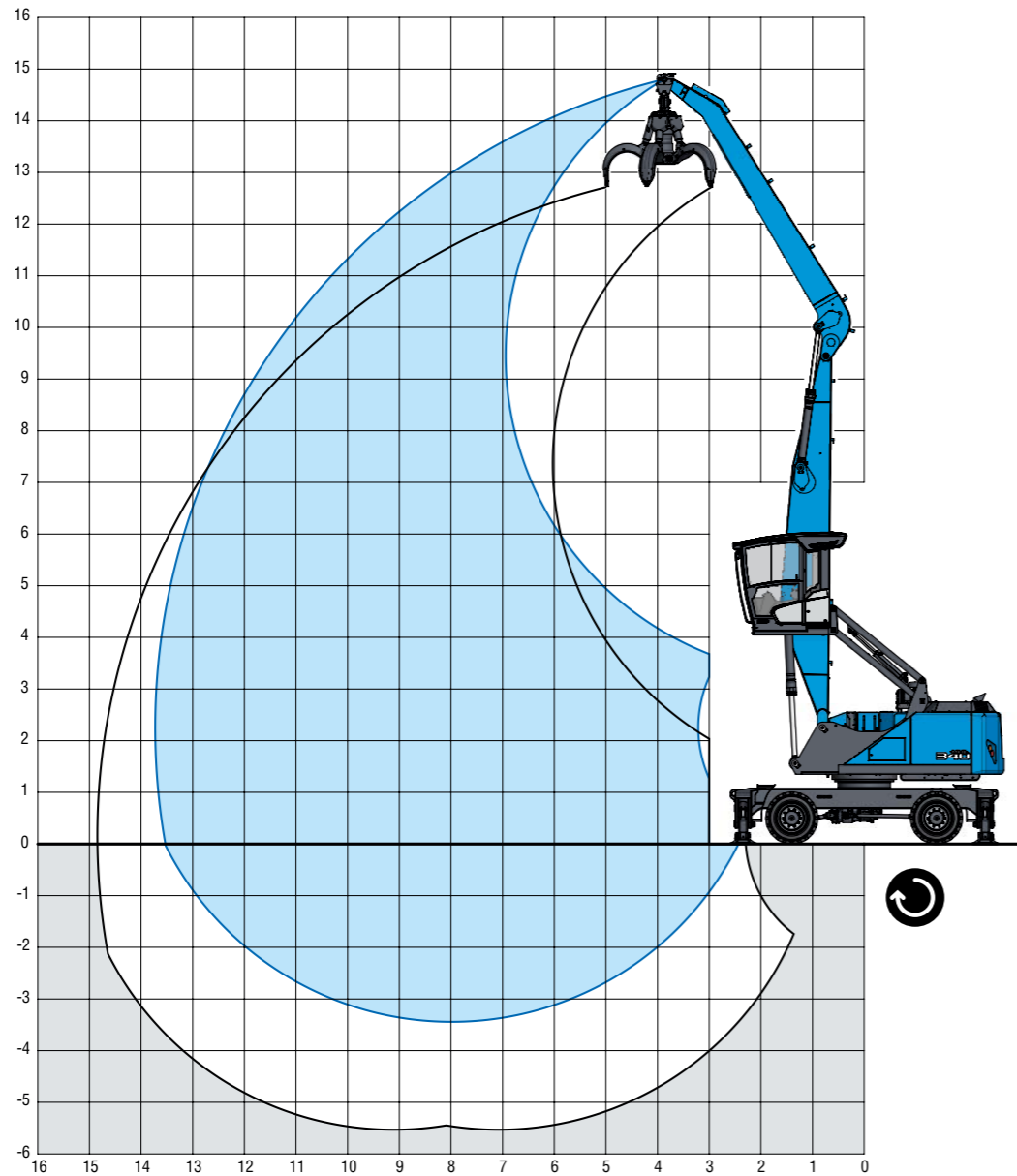




13,7 m

With dipper stick | Mit Ladestiel | Avec balancier  
Con balancín | Con avambraccio industriale | Com braço de carga

| LOADING EQUIPMENT | LADEEINRICHTUNG    | ÉQUIPEMENT CHARGEUR    | EQUIPO DE CARGA | PALA CARICATRICE        | EQUIPAMENTO DE CARGA       |                    |
|-------------------|--------------------|------------------------|-----------------|-------------------------|----------------------------|--------------------|
| Boom              | Ausleger           | Flèche de type caisson | Pluma tipo caja | Braccio                 | Lança                      | 7,2 m              |
| Dipper stick      | Ladestiel          | Balancier              | Balancín        | Avambraccio industriale | Braço de carga             | 6,2 m              |
| Cactus grab       | Mehrschalengreifer | Grappin cactus         | Pulpo           | Polipo multivalve       | Garra de abertura de poços | 0,6 m <sup>3</sup> |



[m]

Lifting capacity | Traglast | Capacité de charge | Capacidad de carga | Capacità di carico | Capacidade de carga

|        |  | 4,5 m         | 6 m           | 7,5 m       | 9 m         | 10,5 m      | 12 m        | 13,5 m             |
|--------|--|---------------|---------------|-------------|-------------|-------------|-------------|--------------------|
| 13,5 m |  |               | (4,5°)        |             |             |             |             |                    |
| 12 m   |  |               | 4,5° (4,5°)   |             |             |             |             |                    |
| 10,5 m |  |               |               | (4,6°)      | (3,0°)      |             |             |                    |
| 9 m    |  |               |               | 4,6° (4,6°) | 3,0° (3,0°) |             |             |                    |
| 7,5 m  |  |               |               | (5,4°)      | (4,3)       | (2,7°)      |             |                    |
| 6 m    |  |               |               | 5,4° (5,4°) | 4,5° (4,5°) | 2,7° (2,7°) |             |                    |
| 4,5 m  |  |               |               | (5,9)       | (4,3)       | (3,3)       |             |                    |
| 3 m    |  |               |               | 6,0° (6,0°) | 5,3° (5,3°) | 4,6° (4,6°) |             |                    |
| 1,5 m  |  |               |               | (5,8)       | (4,2)       | (3,2)       | (2,5)       |                    |
| 0 m    |  |               |               | 6,7° (6,7°) | 6,1° (6,1°) | 4,9 (5,0°)  | 3,6° (3,6°) |                    |
| -1,5 m |  |               |               | (7,5°)      | (5,6)       | (4,1)       | (3,1)       | (2,5)              |
| -3 m   |  |               |               | 7,5° (7,5°) | 7,3° (7,3°) | 6,3° (6,3°) | 4,9 (5,5°)  | 3,9 (4,7°)         |
|        |  | (8,8°)        | (7,5)         | (5,3)       | (3,9)       | (3,0)       | (2,4)       | (1,9)              |
|        |  | 8,8° (8,8°)   | 9,5° (9,5°)   | 7,7° (7,7°) | 6,1 (6,5°)  | 4,7 (5,6°)  | 3,8 (4,7)   | 2,3° (2,3°)        |
|        |  | (10,8)        | (6,9)         | (4,9)       | (3,7)       | (2,9)       | (2,3)       | (1,9)              |
|        |  | 14,3° (14,3°) | 10,4° (10,4°) | 7,8 (8,1°)  | 5,8 (6,7°)  | 4,6 (5,7°)  | 3,7 (4,7)   | 2,9° (2,9°)        |
|        |  | (9,4)         | (6,3)         | (4,6)       | (3,5)       | (2,8)       | (2,2)       | (1,9)              |
|        |  | 14,5° (14,5°) | 10,4 (10,9°)  | 7,4 (8,4°)  | 5,6 (6,8°)  | 4,5 (5,6)   | 3,7 (4,6)   | 3,0° (3,0°)        |
|        |  | (6,8°)        | (5,8)         | (4,3)       | (3,3)       | (2,7)       | (2,2)       | (1,8)              |
|        |  | 6,8° (6,8°)   | 9,8 (10,8°)   | 7,0 ( 8,3°) | 5,4 (6,6°)  | 4,3 (5,4°)  | 3,6 (4,3°)  | 2,5° (2,5°)        |
|        |  | (6,0°)        | (5,5)         | (4,1)       | (3,2)       | (2,6)       | (2,1)       |                    |
|        |  | 6,0° (6,0°)   | 9,5 (10,0°)   | 6,8 (7,7°)  | 5,3 (6,2°)  | 4,3 (4,9°)  | 3,5 (3,8°)  |                    |
|        |  |               | (5,5)         | (4,0)       | (3,1)       |             |             |                    |
|        |  |               | 8,3° (8,3°)   | 6,6° (6,6°) | 5,2° (5,2°) |             |             |                    |
|        |  |               |               |             |             |             |             | max.   máx. 13,7 m |
| 2,3 m  |  |               |               |             |             |             |             | (1,8)              |
|        |  |               |               |             |             |             |             | 2,3° (2,3°)        |



Important notes regarding the load capacities → Page 03 | Wichtige Erläuterungen zu den Traglasten → Seite 03 | Précisions importantes sur les charges → Page 03  
Consideraciones importantes sobre las cargas → Página 03 | Spiegazioni importanti sui carichi massimi → Pagina 03 | Explicações importantes sobre as capacidades de carga → Página 03

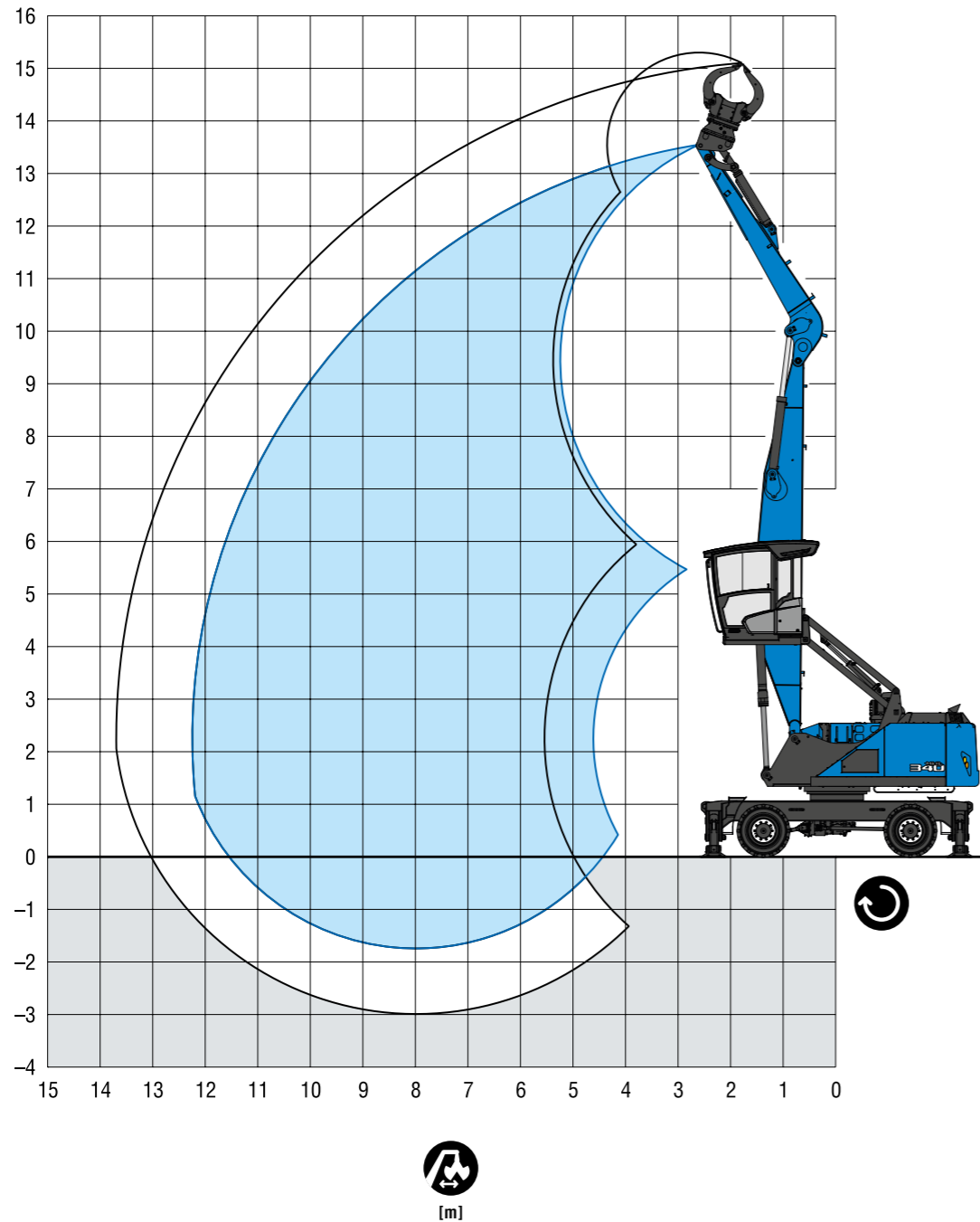
| RECOMMENDED ATTACHMENTS              | EMPFOHLENE ANBAUGERÄTE  | ÉQUIPEMENTS RECOMMANDÉS          | ACCESORIOS RECOMENDADOS              | ATTREZZI CONSIGLIATI                           | ACESSÓRIOS RECOMENDADOS                 |
|--------------------------------------|-------------------------|----------------------------------|--------------------------------------|--|---|
| Recommended attachments upon request | Anbaugeräte auf Anfrage | Grappins recommandés sur demande | Recomendaciones de pulpos a petición | Consigli per la scelta della benna a richiesta | Recomendações sobre garras sob consulta |



12,2 m

With multi-purpose stick | Mit Mehrzweckstiel | Avec balancier à usage multiple  
Con barra de usos múltiples | Con avambraccio universale | Com balanceiro multiuso

| LOADING EQUIPMENT   | LADEEINRICHTUNG | ÉQUIPEMENT CHARGEUR        | EQUIPO DE CARGA         | PALA CARICATRICE       | EQUIPAMENTO DE CARGA |       |
|---------------------|-----------------|----------------------------|-------------------------|------------------------|----------------------|-------|
| Boom                | Ausleger        | Flèche de type caisson     | Pluma tipo caja         | Braccio                | Lança                | 7,2 m |
| Multi-purpose stick | Mehrzweckstiel  | Balancier à usage multiple | Barra de usos múltiples | Avambraccio universale | Balanceiro multiuso  | 4,5 m |
| Sorting grapple     | Sortiergreifer  | Benne trieuse              | Pala clasificadora      | Benna selezionatrice   | Garra de separação   |       |



Lifting capacity | Traglast | Capacité de charge | Capacidad de carga | Capacità di carico | Capacidade de carga

| Reach (m)          | Attachment | 3 m          |           | 4,5 m        |           | 6 m           |           | 7,5 m        |           | 9 m          |           | 10,5 m       |           | 12 m         |           |
|--------------------|------------|--------------|-----------|--------------|-----------|---------------|-----------|--------------|-----------|--------------|-----------|--------------|-----------|--------------|-----------|
|                    |            | Capacity (t) | Angle (°) | Capacity (t) | Angle (°) | Capacity (t)  | Angle (°) | Capacity (t) | Angle (°) | Capacity (t) | Angle (°) | Capacity (t) | Angle (°) | Capacity (t) | Angle (°) |
| 13,5 m             | Grapple    | (7,7°)       |           |              |           |               |           |              |           |              |           |              |           |              |           |
| 12 m               | Grapple    |              |           | (8,0°)       |           | (6,3°)        |           |              |           |              |           |              |           |              |           |
| 10,5 m             | Grapple    |              |           | 8,0° (8,0°)  |           | 6,3° (6,3°)   |           |              |           |              |           |              |           |              |           |
| 9 m                | Grapple    |              |           |              |           | (7,8)         |           | (5,3)        |           |              |           |              |           |              |           |
| 7,5 m              | Grapple    |              |           |              |           | 7,9° (7,9°)   |           | 6,4° (6,4°)  |           |              |           |              |           |              |           |
| 6 m                | Grapple    |              |           |              |           | (7,8)         |           | (5,3)        |           | (3,9)        |           |              |           |              |           |
| 4,5 m              | Grapple    |              |           |              |           | 8,8° (8,8°)   |           | 7,6° (7,6°)  |           | 6,0° (6,1°)  |           |              |           |              |           |
| 3 m                | Grapple    |              |           |              |           | (7,6)         |           | (5,2)        |           | (3,8)        |           | (2,9)        |           |              |           |
| 1,5 m              | Grapple    |              |           |              |           | 9,2° (9,2°)   |           | 7,6° (7,6°)  |           | 6,0° (6,5°)  |           | 4,6° (4,9°)  |           |              |           |
| 0 m                | Grapple    |              |           |              |           | (11,6)        |           | (5,0)        |           | (3,7)        |           | (2,8)        |           |              |           |
| -1,5 m             | Grapple    |              |           |              |           | 11,8° (11,8°) |           | 7,9° (7,9°)  |           | 5,9° (6,6°)  |           | 4,5° (5,6°)  |           |              |           |
|                    |            |              |           |              |           | (10,5)        |           | (4,8)        |           | (3,6)        |           | (2,8)        |           | (2,2)        |           |
|                    |            |              |           |              |           | 14,6° (14,6°) |           | 7,6° (8,2°)  |           | 5,7° (6,7°)  |           | 4,5° (5,6°)  |           | 3,1° (3,1°)  |           |
|                    |            |              |           |              |           | (6,2)         |           | (4,5)        |           | (3,4)        |           | (2,7)        |           | (2,1)        |           |
|                    |            |              |           |              |           | 10,3° (10,9°) |           | 7,3° (8,3°)  |           | 5,5° (6,7°)  |           | 4,4° (5,5°)  |           | 3,5° (4,2°)  |           |
|                    |            |              |           |              |           | (5,7)         |           | (4,2)        |           | (3,3)        |           | (2,6)        |           | (2,1)        |           |
|                    |            |              |           |              |           | 9,8° (10,7°)  |           | 7,0° (8,2°)  |           | 5,3° (6,5°)  |           | 4,3° (5,2°)  |           | 3,5° (3,8°)  |           |
|                    |            |              |           |              |           | (4,1°)        |           | (4,1)        |           | (3,1)        |           | (2,5)        |           |              |           |
|                    |            |              |           |              |           | 4,1° (4,1°)   |           | 6,8° (7,6°)  |           | 5,2° (6,0°)  |           | 4,2° (4,6°)  |           |              |           |
|                    |            |              |           |              |           |               |           | (4,0)        |           | (3,1)        |           |              |           |              |           |
|                    |            |              |           |              |           |               |           | 6,4° (6,4°)  |           | 5,0° (5,0°)  |           |              |           |              |           |
| max.   máx. 12,2 m |            |              |           |              |           |               |           |              |           |              |           |              |           |              |           |
| 2,3 m              | Grapple    |              |           |              |           |               |           |              |           |              |           |              |           | (2,0)        |           |
|                    |            |              |           |              |           |               |           |              |           |              |           |              |           | 3,4° (3,4°)  |           |

Important notes regarding the load capacities → Page 03 | Wichtige Erläuterungen zu den Traglasten → Seite 03 | Précisions importantes sur les charges → Page 03  
Consideraciones importantes sobre las cargas → Página 03 | Spiegazioni importanti sui carichi massimi → Pagina 03 | Explicações importantes sobre as capacidades de carga → Página 03

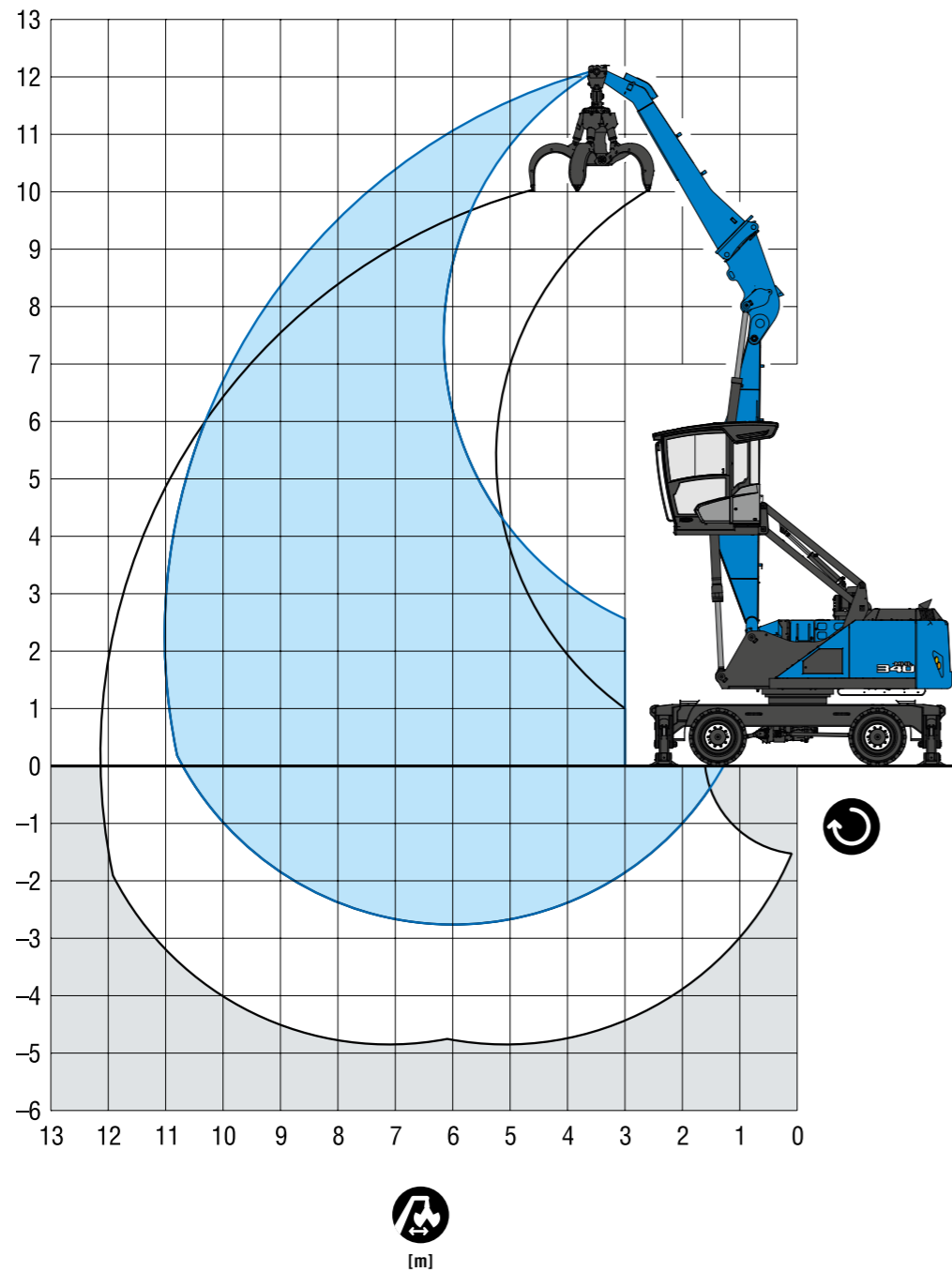
| RECOMMENDED ATTACHMENTS              | EMPFOHLENE ANBAUGERÄTE  | ÉQUIPEMENTS RECOMMANDÉS          | ACCESORIOS RECOMENDADOS              | ATTREZZI CONSIGLIATI                           | ACESSÓRIOS RECOMENDADOS                 |
|--------------------------------------|-------------------------|----------------------------------|--------------------------------------|--|---|
| Recommended attachments upon request | Anbaugeräte auf Anfrage | Grappins recommandés sur demande | Recomendaciones de pulpos a petición | Consigli per la scelta della benna a richiesta | Recomendações sobre garras sob consulta |



11,0 m

With dipper stick | Mit Ladestiel | Avec balancier  
 Con balancín | Con avambraccio industriale | Com braço de carga

| LOADING EQUIPMENT FQC               | LADEEINRICHTUNG FQC                                      | ÉQUIPEMENT CHARGEUR FQC                                   | EQUIPO DE CARGA FQC                                   | PALA CARICATRICE FQC                               | EQUIPAMENTO DE CARGA FQC  |        |
|-------------------------------------|--|---|---|--|---|--------|
| Boom                                | Ausleger   | Flèche de type caisson                                    | Pluma tipo caja                                       | Braccio  | Lança   | 5,2 m  |
| Dipper stick                        | Ladestiel  | Balancier   | Balancín  | Avambraccio industriale                            | Braço de carga  | 5,4 m  |
| Cactus grab with Fuchs QuickConnect | Mehrschalengreifer mit Schnellwechsel Fuchs QuickConnect | Grappin multicoque avec attache rapide Fuchs QuickConnect | Cuchara pólopo con engancho rápido Fuchs QuickConnect | Benna polipo con attacco rapido Fuchs QuickConnect | Garra de mandíbulas múltiples com troca rápida Fuchs QuickConnect | 0,6 m³ |



Lifting capacity | Traglast | Capacité de charge | Capacidad de carga | Capacità di carico | Capacidade de carga

|        |  | 3 m                     | 4,5 m                   | 6 m                    | 7,5 m                 | 9 m                  | 10,5 m                |
|--------|--|-------------------------|-------------------------|------------------------|-----------------------|----------------------|-----------------------|
| 10,5 m |  |                         |                         | (5,0°)<br>5,0° (5,0°)  |                       |                      |                       |
| 9 m    |  |                         |                         | (6,6°)<br>6,6° (6,6°)  | (4,9°)<br>4,9° (4,9°) |                      |                       |
| 7,5 m  |  |                         |                         |                        | (5,2)<br>6,3° (6,3°)  | (3,7)<br>4,0° (4,0°) |                       |
| 6 m    |  |                         |                         | (7,7)<br>8,0° (8,0°)   | (5,2)<br>7,3° (7,3°)  | (3,7)<br>5,5° (5,5°) |                       |
| 4,5 m  |  |                         |                         | (7,3)<br>9,0° (9,0°)   | (5,0)<br>7,7° (7,7°)  | (3,6)<br>5,7 (6,7°)  | (2,6)<br>3,3° (3,3°)  |
| 3 m    |  |                         | (11,1)<br>11,8° (11,8°) | (6,8)<br>10,0° (10,0°) | (4,7)<br>7,5 (8,1°)   | (3,4)<br>5,5 (6,8°)  | (2,6)<br>4,2° (4,2°)  |
| 1,5 m  |  | (19,6)<br>25,5° (25,5°) | (9,7)<br>15,1° (15,1°)  | (6,2)<br>10,3 (10,9°)  | (4,3)<br>7,1 (8,5°)   | (3,2)<br>5,3 (6,7°)  | (2,5)<br>4,1 (5,2°)   |
| 0 m    |  | (7,7°)<br>7,7° (7,7°)   | (8,7)<br>15,8° (15,8°)  | (5,7)<br>9,6 (11,0°)   | (4,1)<br>6,8 (8,3°)   | (3,1)<br>5,1 (6,4°)  | (2,5)<br>3,9 (3,9°)   |
| -1,5 m |  | (7,0°)<br>7,0° (7,0°)   | (8,2)<br>14,3° (14,3°)  | (5,4)<br>9,3 (10,1°)   | (3,9)<br>6,6 (7,5°)   | (3,0)<br>5,1 (5,4°)  |                       |
|        |  |                         |                         |                        |                       |                      | max.   máx. 11,0 m    |
| 2,3 m  |  |                         |                         |                        |                       |                      | (2,3°)<br>2,3° (2,3°) |

**i** Important notes regarding the load capacities → Page 03 | Wichtige Erläuterungen zu den Traglasten → Seite 03 | Précisions importantes sur les charges → Page 03  
 Consideraciones importantes sobre las cargas → Página 03 | Spiegazioni importanti sui carichi massimi → Pagina 03 | Explicações importantes sobre as capacidades de carga → Página 03

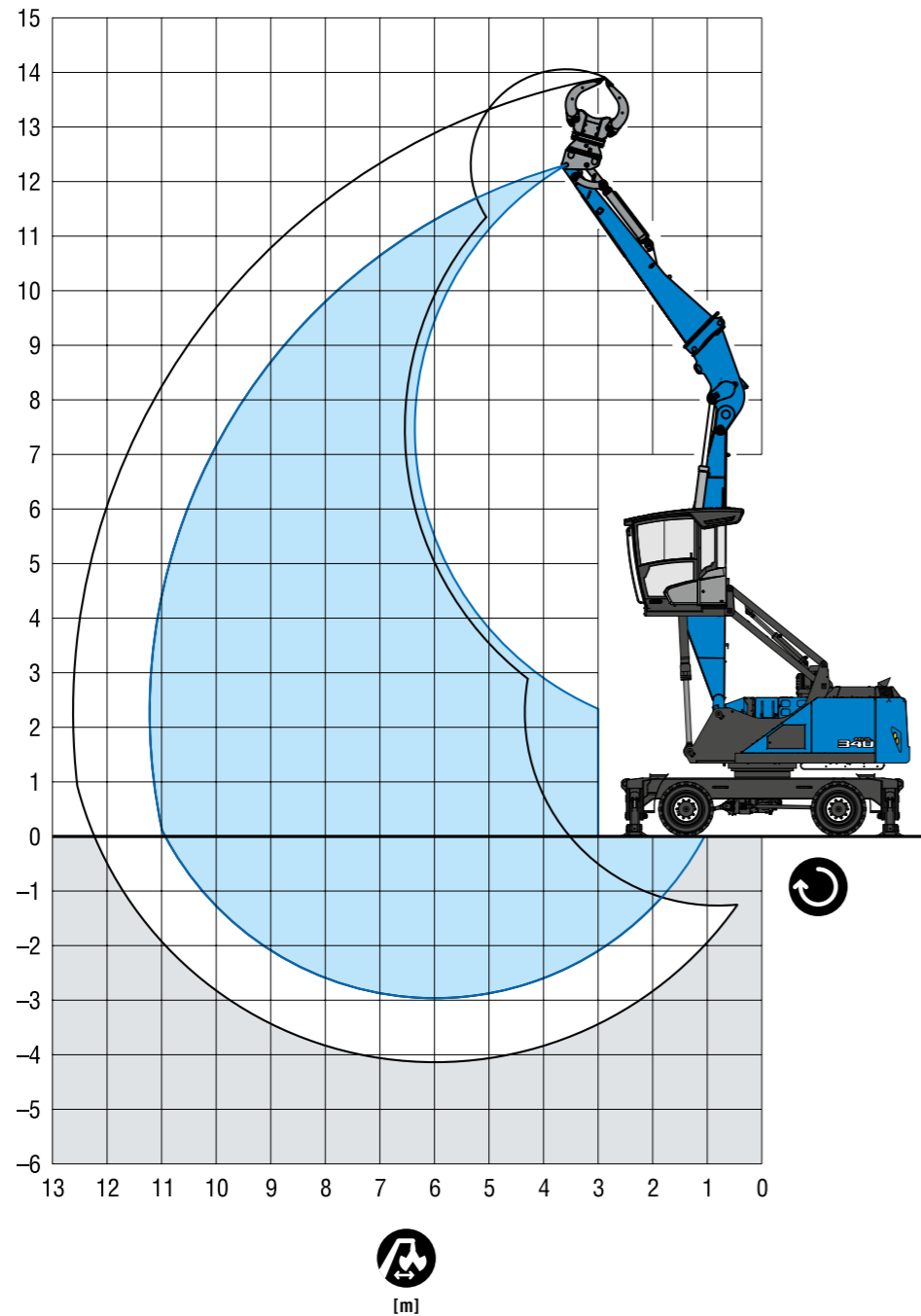
| RECOMMENDED ATTACHMENTS              | EMPFOHLENE ANBAUGERÄTE  | ÉQUIPEMENTS RECOMMANDÉS          | ACCESORIOS RECOMENDADOS              | ATTREZZI CONSIGLIATI                           | ACESSÓRIOS RECOMENDADOS                 |
|--------------------------------------|-------------------------|----------------------------------|--------------------------------------|--|---|
| Recommended attachments upon request | Anbaugeräte auf Anfrage | Grappins recommandés sur demande | Recomendaciones de pulpos a petición | Consigli per la scelta della benna a richiesta | Recomendações sobre garras sob consulta |



11,2 m

With multi-purpose stick | Mit Mehrzweckstiel | Avec balancier à usage multiple  
 Con barra de usos múltiples | Con avambraccio universale | Com balanceiro multiuso

| LOADING EQUIPMENT FQC                | LADEINRICHTUNG FQC                                   | ÉQUIPEMENT CHARGEUR FQC                              | EQUIPO DE CARGA FQC                                       | PALA CARICATRICE FQC                                       | EQUIPAMENTO DE CARGA FQC                               |       |
|--------------------------------------|--|--|---|--|--|-------|
| Boom                                 | Ausleger   | Flèche de type caisson                               | Pluma tipo caja   | Braccio  | Lança  | 5,2 m |
| Multi-purpose stick                  | Mehrzweckstiel                                       | Balancier à usage multiple                           | Barra de usos múltiples                                   | Avambraccio universale                                     | Balanceiro multiuso                                    | 5,6 m |
| Sorting grab with Fuchs QuickConnect | Sortiergreifer mit Schnellwechsel Fuchs QuickConnect | Benne trieuse avec attache rapide Fuchs QuickConnect | Pala clasificadora con enganche rápido Fuchs QuickConnect | Benna selezionatrice con attacco rapido Fuchs QuickConnect | Garra de separação com troca rápida Fuchs QuickConnect |       |



Lifting capacity | Traglast | Capacité de charge | Capacidad de carga | Capacità di carico | Capacidade de carga

| Reach (m) | Attachment | Lifting Capacity (t)    |                          |                        |                      |                      |                       |
|-----------|------------|-------------------------|--------------------------|------------------------|----------------------|----------------------|-----------------------|
|           |            | 3 m                     | 4,5 m                    | 6 m                    | 7,5 m                | 9 m                  | 10,5 m                |
| 10,5 m    | ☞☞         |                         |                          | (5,0°)<br>5,0° (5,0°)  |                      |                      |                       |
| 9 m       | ☞☞         |                         |                          |                        | (4,8)<br>4,8° (4,8°) |                      |                       |
| 7,5 m     | ☞☞         |                         |                          |                        | (5,1)<br>5,9° (5,9°) | (3,5)<br>4,0° (4,0°) |                       |
| 6 m       | ☞☞         |                         |                          |                        | (5,0)<br>6,8° (6,8°) | (3,5)<br>5,3° (5,3°) | (2,0)<br>2,0° (2,0°)  |
| 4,5 m     | ☞☞         |                         |                          | (7,2)<br>8,4° (8,4°)   | (4,8)<br>7,3° (7,3°) | (3,4)<br>5,5 (6,3°)  | (2,5)<br>3,4° (3,4°)  |
| 3 m       | ☞☞         |                         | (10,2°)<br>10,2° (10,2°) | (6,7)<br>9,4° (9,4°)   | (4,5)<br>7,3 (7,7°)  | (3,2)<br>5,3 (6,4°)  | (2,4)<br>4,0° (4,2°)  |
| 1,5 m     | ☞☞         | (20,0)<br>24,3° (24,3°) | (9,7)<br>14,4° (14,4°)   | (6,0)<br>10,1° (10,3°) | (4,2)<br>7,0 (8,0°)  | (3,0)<br>5,1 (6,4°)  | (2,3)<br>3,9° (4,6°)  |
| 0 m       | ☞☞         | (8,1°)<br>8,1° (8,1°)   | (8,5)<br>15,4° (15,4°)   | (5,5)<br>9,5 (10,6°)   | (3,9)<br>6,6 (8,0°)  | (2,9)<br>4,9 (6,1°)  | (2,2)<br>3,9° (4,2°)  |
| -1,5 m    | ☞☞         | (6,8°)<br>6,8° (6,8°)   | (7,9)<br>14,2° (14,2°)   | (5,1)<br>9,1 (9,9°)    | (3,7)<br>6,4 (7,3°)  | (2,7)<br>4,8 (5,3°)  |                       |
|           |            |                         |                          |                        |                      |                      | max.   máx. 11,2 m    |
| 2,3 m     | ☞☞         |                         |                          |                        |                      |                      | (1,9°)<br>1,9° (1,9°) |

**i** Important notes regarding the load capacities → Page 03 | Wichtige Erläuterungen zu den Traglasten → Seite 03 | Précisions importantes sur les charges → Page 03  
 Consideraciones importantes sobre las cargas → Página 03 | Spiegazioni importanti sui carichi massimi → Pagina 03 | Explicações importantes sobre as capacidades de carga → Página 03

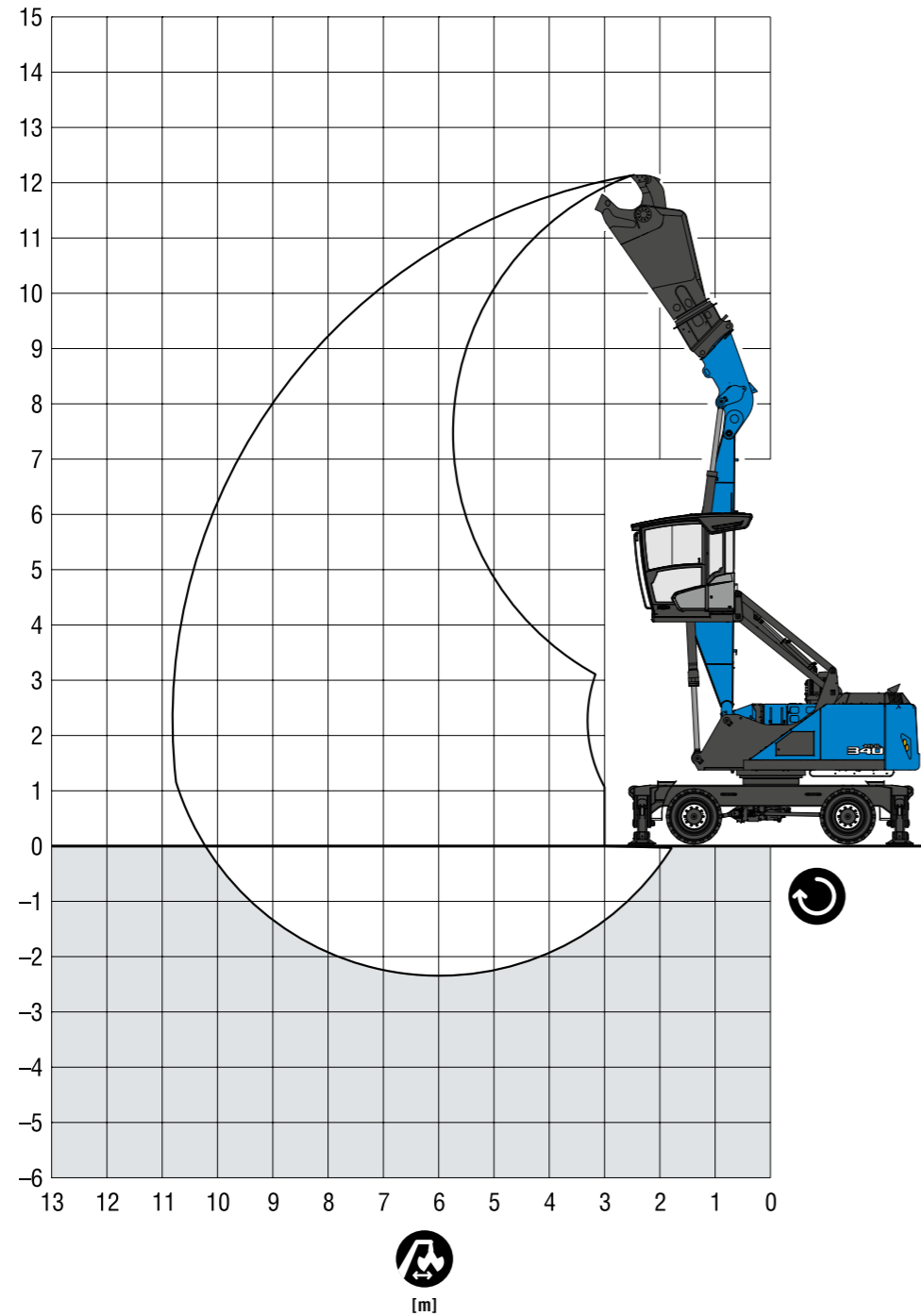
| RECOMMENDED ATTACHMENTS              | EMPFOHLENE ANBAUGERÄTE  | ÉQUIPEMENTS RECOMMANDÉS          | ACCESORIOS RECOMENDADOS              | ATTREZZI CONSIGLIATI                           | ACESSÓRIOS RECOMENDADOS                 |
|--------------------------------------|-------------------------|----------------------------------|--------------------------------------|--|---|
| Recommended attachments upon request | Anbaugeräte auf Anfrage | Grappins recommandés sur demande | Recomendaciones de pulpos a petición | Consigli per la scelta della benna a richiesta | Recomendações sobre garras sob consulta |



11,2 m

With scrap shears | Mit Schrottschere | Avec cisaille à ferrailles  
 Con cizalla para chatarra | Cesoia per sfridi | Com tesoura de sucata

| LOADING EQUIPMENT FQC                        | LADEINRICHTUNG FQC   | ÉQUIPEMENT CHARGEUR FQC   | EQUIPO DE CARGA FQC   | PALA CARICATRICE FQC   | EQUIPAMENTO DE CARGA FQC                                       |       |
|--|--|---|---|--|--|-------|
| Boom   | Ausleger   | Flèche de type caisson  | Pluma tipo caja   | Braccio  | Lança  | 5,2 m |
| Scrap shears GXP 300 with Fuchs QuickConnect | Schrottschere GXP 300R mit Schnellwechsel Fuchs QuickConnect | Cisaille à ferrailles GXP 300R avec attache rapide Fuchs QuickConnect | Cizalla para chatarra GXP 300R con enganche rápido Fuchs QuickConnect | Cesoia per sfridi GXP 300R con attacco rapido Fuchs QuickConnect | Tesoura de sucata GXP 300R com troca rápida Fuchs QuickConnect |       |



## QuickConnect Systems

### The unique QuickConnect system

Time is money – and with the QuickConnect systems, you can reduce attachment change downtime to a fraction of the usual cost. For example, in less than a minute you can switch from a multi-purpose stick / grab combination to a dipper stick with a magnet or scrap shears. Using leak-free quick couplers, attachments can be changed quickly and safely from inside the cab. For the operator, climbing in and out and removing and replacing bolts are now just things of the past.

### Le QuickConnect unique

Le temps, c'est de l'argent, et avec QuickConnect systèmes, la durée d'équipement lors du remplacement d'outil est réduite à une fraction de la durée habituelle. Il est par exemple possible de remplacer en moins d'une minute un balancier à usage multiple avec grappin, un balancier avec plaque magnétique ou une cisaille à ferrailles. Grâce aux raccords rapides étanches, les outils peuvent être remplacés de façon sûre et rapide à partir de la cabine. Ainsi, la montée et la descente du conducteur ainsi que la retenue compliquée des boulons font désormais partie du passé.

### L'esclusivo QuickConnect

Il tempo è denaro: grazie a QuickConnect sistemi i tempi di sostituzione di un utensile vengono notevolmente ridotti e di conseguenza anche i costi. Ad esempio, in meno di un minuto è possibile sostituire un avambraccio universale con una benna mordente o un avambraccio con un disco magnetico o una cesoia per sfridi. Con gli attacchi rapidi a tenuta stagna, gli utensili vengono sostituiti in modo rapido e sicuro dalla cabina. L'accesso e la discesa del conducente e il complicato utilizzo dei bulloni appartengono al passato.

### Das einmalige QuickConnect

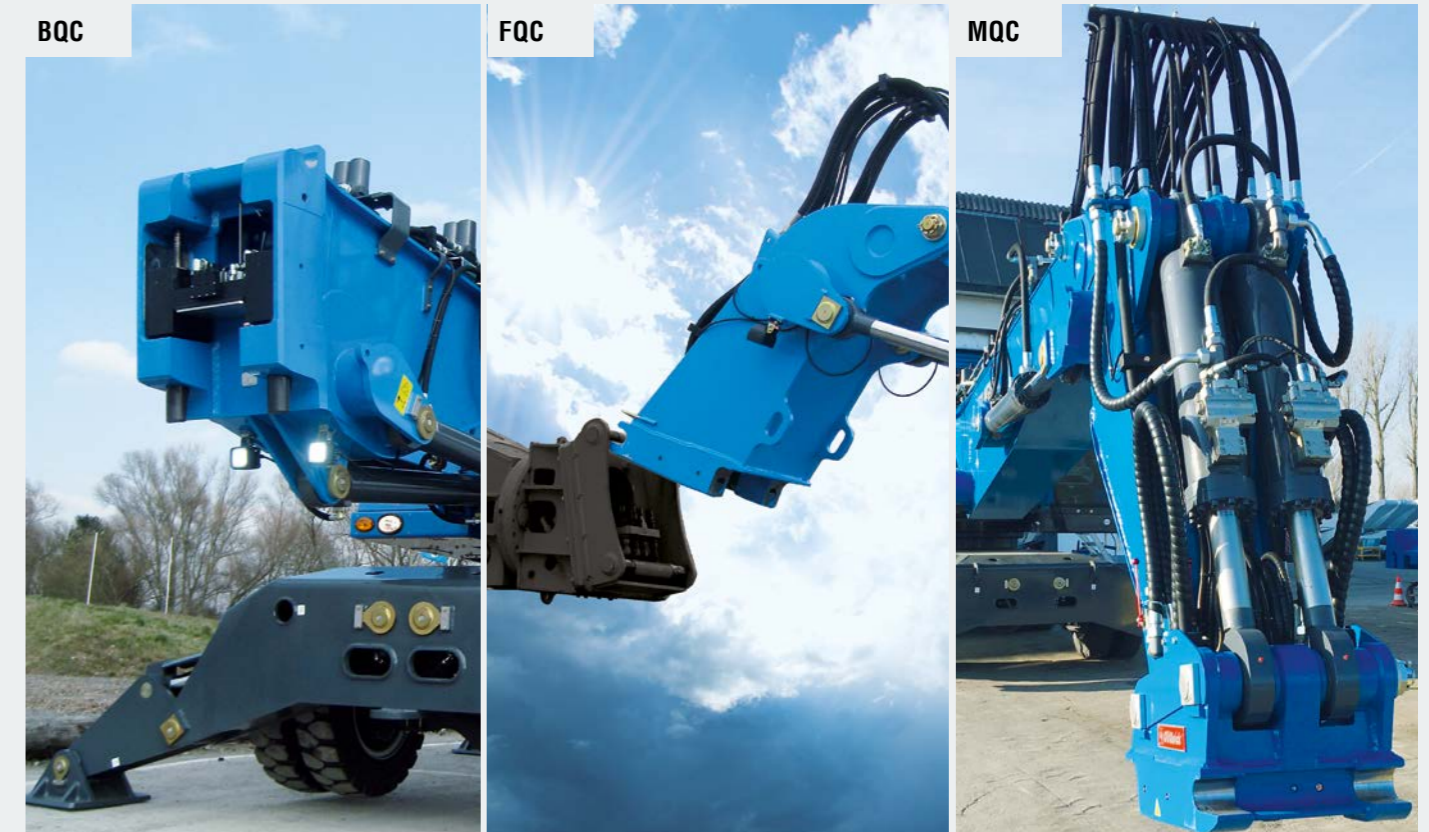
Zeit ist Geld – und mit QuickConnect Systemen lässt sich die Rüstzeit beim Werkzeugwechsel auf einen Bruchteil des herkömmlichen Aufwands reduzieren. In weniger als einer Minute lassen sich damit beispielsweise Mehrzweckstiel mit Greifer, Ladestiel mit Magnetplatte oder Schrottschere austauschen. Mit leakagefreien Schnellkupplungen werden die Werkzeuge schnell und sicher von der Kabine aus gewechselt. Das Auf- und Absteigen des Fahrers sowie das umständliche Hantieren mit Bolzen gehören damit der Vergangenheit an.

### El sistema único QuickConnect

El tiempo es oro, y con QuickConnect sistemas el tiempo de preparación al cambiar de herramienta se puede reducir a una fracción del tiempo habitual. Permite sustituir en menos de un minuto la barra de usos múltiples por una cuchara, un balancín con placa magnética o una cizalla para chatarra, por ejemplo. Con los acoplamientos rápidos sin fugas, las herramientas se cambian desde la cabina de forma rápida y segura. La subida y bajada del conductor y los complejos trabajos con tornillos son ya cosa del pasado.

### A QuickConnect única

Tempo é dinheiro e o sistema QuickConnect sistemas permite reduzir ao mínimo o tempo de troca de ferramenta. Em menos de um minuto, é possível, por exemplo, trocar balanceiros multiusos com garra, um braço de carga com placa magnética ou tesouras de sucata. Graças aos acoplamentos rápidos sem fugas, as ferramentas são trocadas a partir da cabine de forma rápida e segura. A entrada e saída do condutor, assim como o manuseio demorado de pinos, já fazem parte do passado.



## MODULAR SYSTEM

### ATTACHMENTS



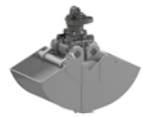
Cactus grab



Timber grapple



Magnet plate



Clamshell grab

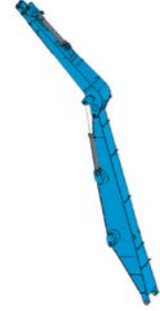


Load hook

### LOADING EQUIPMENT



Straight



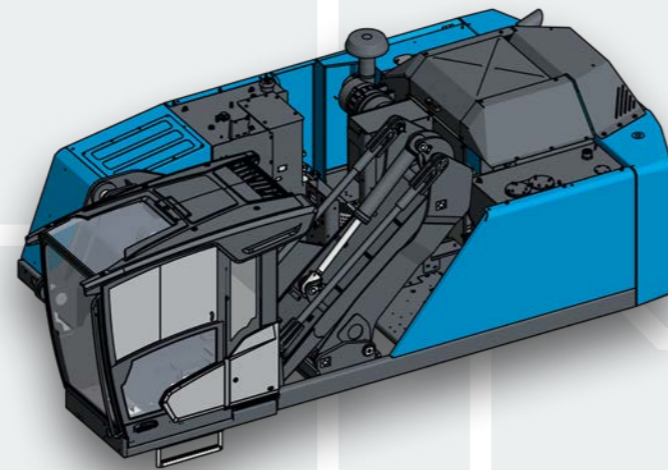
Universal stick



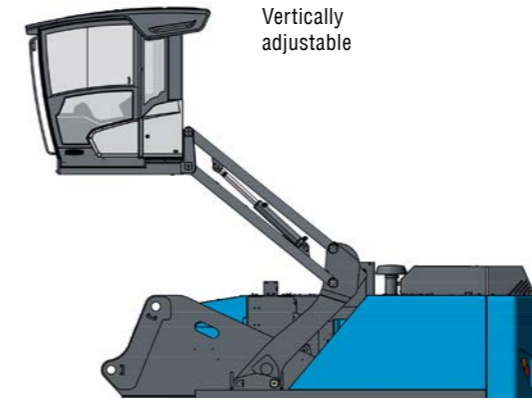
FQC  
Fuchs QuickConnect



MQC  
Multi QuickConnect

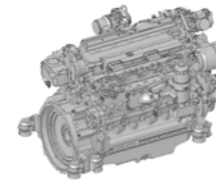


### CAB SYSTEMS

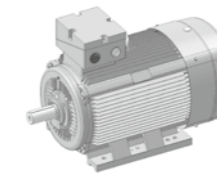


Vertically adjustable

### ENGINES



Diesel engine

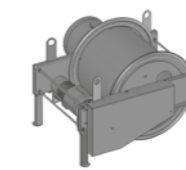


Electric motor

### OPTIONS

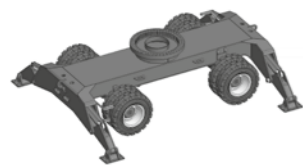


Cable reel

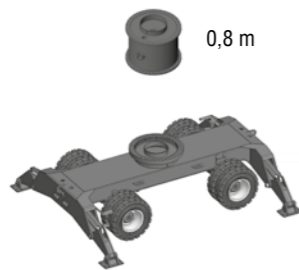


Cable drum

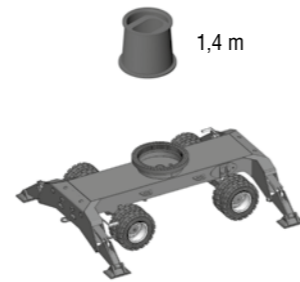
### UNDERCARRIAGES



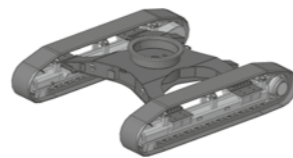
Standard-undercarriage



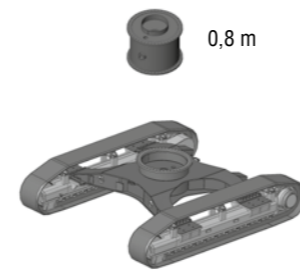
Standard-undercarriage



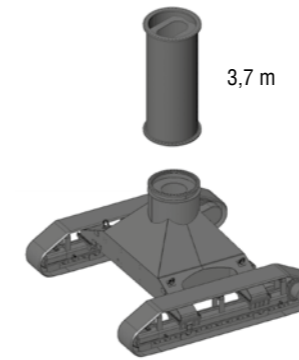
XL-undercarriage



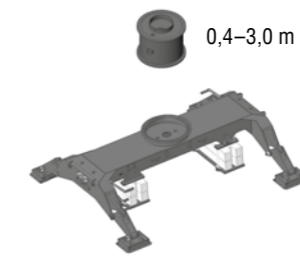
Crawler



Crawler



Crawler: XL-undercarriage



AHL Standard-undercarriage



AHL Pylon



**FUCHS**<sup>®</sup>  
A TEREX BRAND

**WORKS FOR YOU.**<sup>™</sup>

[www.terex-fuchs.com](http://www.terex-fuchs.com)

March 2023. Product specifications and prices are subject to change without notice or obligation. The photographs and/or drawings in this document are for illustrative purposes only. Refer to the appropriate Operator's Manual for instructions on the proper use of this equipment. Failure to follow the appropriate Operator's Manual when using our equipment or to otherwise act irresponsibly may result in serious injury or death. The only warranty applicable to our equipment is the standard written warranty applicable to the particular product and sale and Terex makes no other warranty, express or implied. © Terex Corporation 2023 - Terex, the Terex Crown design, Fuchs and Works For You are trademarks of Terex Corporation or its subsidiaries.

Terex<sup>®</sup> Deutschland GmbH | Industriestraße 3 | 76669 Bad Schönborn | Germany | Fon: +49 (0) 7253 84-0 | Fax: +49 (0) 7253 84-102 | [info@terex-fuchs.com](mailto:info@terex-fuchs.com)

