

T392EN
0221



CINGO multi-purpose transporters



MERLO

CINGO multi-purpose transporters

Cingo multi-purpose transporters are compact and highly manageable machines, designed to work in tight spaces. Their low centre of gravity guarantees maximum transversal stability on slopes, while their tracks allow for lower ground pressure and a better grip on deformed and irregular terrain.

The versatility and multi-purpose qualities of the Cingo system are unique: the patented quick-coupling device allows for the use of countless different attachments.

The wide range available includes models with capacities of 400 kg to 1.200 kg, and consists of three types of machines:

- ✓ **TRANSPORTERS:** mini operating machines for the transport and loading of materials
- ✓ **MULTIFUNCTION MACHINES:** mini operating machines equipped with Merlo's patented quick-coupling device, capable of being paired with countless attachments





Winning innovations

Cingo model machines are tireless and versatile, and are specifically designed for the maintenance of green areas (grass mowing, twig shredding and pruning), road and forest cleaning, winter road maintenance, agricultural and livestock activities, and construction work (excavation, transport, concrete mixing, etc.).

Safe and reliable for countless applications, the Cingo models are manageable and easy to drive thanks to their hydraulic controls and hydraulic or hydrostatic transmissions. And they're even capable of operating in confined spaces: in fact, all the various models have a compact width, and can turn in place thanks to the counter-rotation of the tracks.

All the “EVO” series machines, driven by hydrostatic transmissions, are now equipped with hydraulic servo-assisted transmission controls. A 70% reduction of the force needed to operate the levers greatly improves the driving comfort. Driving precision is also enhanced. There are also major advantages for maintenance, as this system no longer requires periodical adjustments.

CINGO transporter models

Indispensable for material transport and handling operations

CINGO M500 MINI SERIES

This minidumper, available in three versions (dumper, dumper with self-loading bucket, small agricultural dumper) is a handy, compact and safe transporter, which offers superior class features, such as orbital hydraulic motors for maximum traction and *overcenter* valve, which allows you to control the uphill/downhill speed with the machine loaded.

Among the easy and intuitive controls are the parking brake with manual control, and an optional digital hour metre and tachometer display.



CINGO M500 TECHNICAL DATA

| PERFORMANCE | | TRANSMISSION AND HYDRAULIC SYSTEM | | WEIGHT AND DIMENSIONS | |
|------------------|-------------------|-----------------------------------|-----------|-----------------------|------------|
| Maximum capacity | 500 kg | Transmission type | Hydraulic | Weight | 210/230 kg |
| Petrol engine | Honda 5,5 HP | Hydraulic transmission pumps | Orbital | Width | 690 mm |
| Ignition | Manual pull start | Service pump | - | Length | 1.470 mm |
| Maximum speed | 3,5 km/h | | | | |



CINGO M700TD

This compact transporter is equipped with hydraulic transmission with gear pumps and hydraulic gear motors with the possibility of moving at double speed.

Excellent performance and maximum safety are also guaranteed by the *overcenter* valve for controlling speed on slopes.

Replacing the attachments available for this transporter model is facilitated by the possibility of placing the attachment on the ground with four support feet.



CINGO M700TD TD TECHNICAL DATA

| PERFORMANCE | | TRANSMISSION AND HYDRAULIC SYSTEM | | WEIGHT AND DIMENSIONS | |
|------------------|--------------|-----------------------------------|-------------|-----------------------|----------|
| Maximum capacity | 700 kg | Transmission type | Hydraulic | Weight | 480 kg |
| Petrol engine | Honda 12 HP | Hydraulic transmission pumps | Gear motors | Width | 750 mm |
| Ignition | Electrical | Service pump | Gears 6 cc | Length | 1.640 mm |
| Two speeds | 2,5 - 4 km/h | | | | |

CINGO M8.3TD-EVO

The hydrostatic system, with hydraulic servo-assisted controls, also allows you to manage the speed from a few metres per hour up to a maximum of 4 km/h. It also allows you to control the steering with ease and micrometric precision for work accuracy and driving safety.



CINGO M8.3TD-EVO TECHNICAL DATA

| PERFORMANCE | | TRANSMISSION AND HYDRAULIC SYSTEM | | WEIGHT AND DIMENSIONS | |
|------------------|--------------|-----------------------------------|---------------------|---------------------------|----------|
| Maximum capacity | 800 kg | Transmission type | Hydrostatic | Weight | 510 kg |
| Diesel Engine | Kubota 17 HP | Hydraulic transmission pumps | Gear motors | Width | 800 mm |
| Ignition | Electrical | Service pump | Gears 8 cc + 2,5 cc | Length (with dumper body) | 1.800 mm |
| Maximum speed | 4 km/h | | | | |

CINGO multifunction models

Multifunction system, versatility for every sector

The versatility and multi-purpose qualities of the Cingo system are unique. The quick attachment coupling device equips the sturdy tracked truck with two strong steel booms. This hydraulically controlled coupling system is patented and allows the rapid and simple replacement of innumerable attachments.

CINGO M8.3EVO

Thanks to its compact size, the Cingo M8.3EVO is a multifunction machine ideal for working in particularly confined spaces. The 17 HP diesel engine and the tracks' high angle of contact allow the machine to overcome obstacles, guaranteeing maximum versatility and functionality in all work situations. As with all Cingo models equipped with hydrostatic transmission with gear motors, the integrated parking brake allows for excellent dynamic braking, guaranteeing a lower stopping distance, and therefore greater safety. The hydraulic servo-assisted controls also allow the speed to be regulated from a few metres per hour up to a maximum of 4 km/h, and the steering to be controlled with ease and micrometric precision.

CINGO M8.3EVO TECHNICAL DATA

| PERFORMANCE | | TRANSMISSION AND HYDRAULIC SYSTEM | | WEIGHT AND DIMENSIONS | |
|------------------|--------------|---|------------------------|-----------------------|----------|
| Maximum capacity | 800 kg | Transmission type | Hydrostatic | Weight | 510 kg |
| Diesel Engine | Kubota 17 HP | Hydraulic transmission pumps | Gear motors | Width | 800 mm |
| Ignition | Electrical | Service pump | Gears 8 cc + 2,5 cc | Length | 1.600 mm |
| Maximum speed | 4 km/h | Maximum system flow rate (auxiliary circuit) | 27 l/min | | |





CINGO M12.3EVO

The Cingo M12.3 EVO, equipped with gear motors and integrated parking brake, is the largest and most versatile multifunction machine.

It is equipped with a powerful 21 HP diesel engine and suitable tracks that allow it to operate in any terrain condition, thanks to excellent ground contact. Ideal in hilly and mountain areas where the compact size, low centre of gravity and remarkable traction allow you to work effectively and safely.

The hydrostatic system, with hydraulic servo-assisted controls, also allows you to manage the speed from a few metres per hour up to a maximum of 5 km/h. It also allows you to control the steering with ease and micrometric precision for work accuracy and driving safety.



CINGO M12.3EVO TECHNICAL DATA

| PERFORMANCE | | TRANSMISSION AND HYDRAULIC SYSTEM | | WEIGHT AND DIMENSIONS | |
|------------------|--------------|---|---------------------|-----------------------|----------|
| Maximum capacity | 1.200 kg | Transmission type | Hydrostatic | Weight | 720 kg |
| Diesel Engine | Kubota 21 HP | Hydraulic transmission pumps | Gear motors | Width | 1.000 mm |
| Ignition | Electrical | Service pump | Gears 8 + 2,5 cc | Length | 1.800 mm |
| Maximum speed | 5 km/h | Maximum system flow rate (auxiliary circuit) | 27 + 8 l/min | | |

CINGO M12.3 EVO HANDLER 400

HANDLER 400

The Exclusive Handler creates a genuine compact telescopic handler, mounted on the Cingo M12.3EVO Model. It takes few seconds to connect the desired attachment to the head in order to respond quickly and effectively to the increasingly new demands for lifting, excavating, transporting, loading, unloading and precise handling, The handler 400 is supplied with forks as standard, however, when required the telescopic boom can also be fitted with a wide variety of other attachments (loaders, forks with grab, log gripper, hedge cutters, etc.) for lifting, digging, transporting and cutting.

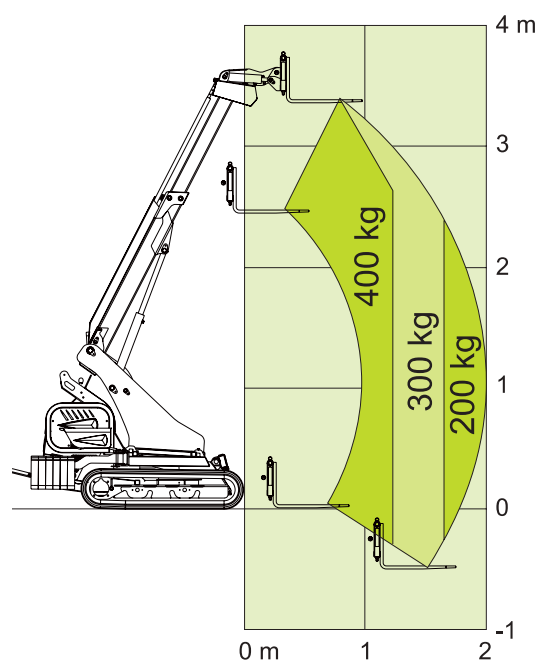
HANDLER 400 TECHNICAL DATA

| | |
|--|----------------------------|
| Maximum load capacity (kg) | 400 |
| Handler attachment weight (kg) | 680 (without the machine) |
| Lift height (m) | 3,4 |
| Kubota Diesel Engine (HP) | 21 |
| Maximum speed (km/h) | 4,9 |
| Transmission | Hydrostatic |
| Boom controls | Electromechanical joystick |
| Front hydraulic stabiliser | Standard |
| Double pump and auxiliary service line | Standard |

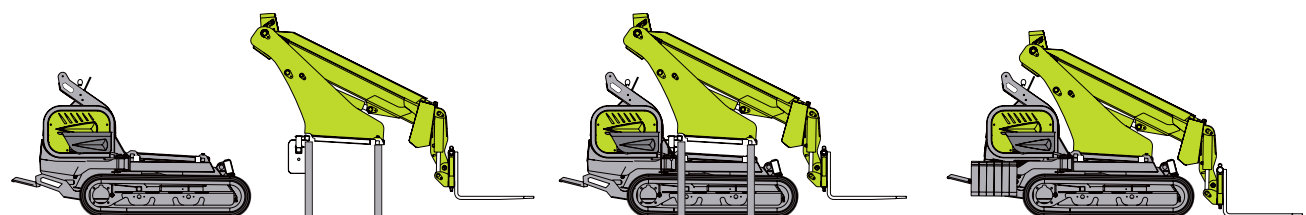
HANDLER 400

The Handler 400's maximum load capacity with the boom retracted amounts to 400 kg (including the fork attachment).

The attachment is equipped with an anti-tipping system in order to ensure maximum operator safety.



Attachment assembly sequence





HANDLER 400

IMPLEMENT-HOLDER FRONT
CARRIAGE WITH MANUAL
LOCK

.....

TELESCOPIC BOOM SLIDING ON
ADJUSTABLE ANTI-FRICTION PADS

.....

REMOVABLE MULTIFUNCTION
ARMS OF MERLO'S EXCLUSIVE
PATENTED QUICK-COUPLING
SYSTEM, DESIGNED FOR USE
WITH COUNTLESS TYPES OF
ATTACHMENTS

.....

CONVENIENT
ELECTROMECHANICAL JOYSTICK
CONTROLS

.....

POWERFUL 21 HP DIESEL ENGINE

.....

STURDY RUBBER TRACK
AND RUNNING GEAR WITH
OSCILLATING ROLLERS

.....

HYDROSTATIC TRANSMISSION
WITH HYDRAULIC GEAR MOTORS
AND BUILT-IN PARKING BRAKE

.....



LIST OF ATTACHMENTS

| CINGO TRANSPORTER MODELS | M500* | M700TD | M8.3TD EVO |
|--|-------|--------|------------|
| Dumper body | X | X | X |
| Dumper body with self-loading bucket | X | X | X |
| Dumper body with openable sideboards | X | X | X |
| 300-litre concrete mixer | | X | X |
| 300-litre concrete mixer with self-loading bucket | | X | X |
| Front blade | | X | X |
| High-capacity dumper body with front sideboard | | X | X |
| High-capacity Dumper body with front sideboard and self-loading bucket | | X | X |
| Dumper body with high unloading and self-loading bucket | | X | X |
| 200-litre sprayer with dedicated petrol engine | | X | X |
| Manual 20 kg hydraulic hammer | | X | X |

* the attachments are not interchangeable for the M500 mini series

| CINGO MULTIFUNCTION MODELS | | M8.3EVO | M12.3EVO |
|--|--|---------|----------|
| <i>Attachments for the construction and earth-moving sectors</i> | | | |
| Dumper body | | X | X |
| Dumper body with self-loading bucket | | X | X |
| Dumper body with high unloading | | X | X |
| 300-litre concrete mixer | | X | X |
| 300-litre concrete mixer with self-loading bucket | | X | X |
| Manual hydraulic hammer - 20 kg | | X | X |
| Dumper body with openable sideboards and trilateral tipping | | X | X |
| <i>Attachments for agriculture, forestry and green areas</i> | | | |
| Dumper body with openable sideboards and agricultural flat bed | | X | X |
| Shredder for shrubs, grass and stalks | | X | X |
| Soil tiller | | X | X |
| Sprayer | | X | X |
| Auger | | X | X |
| Lift carrier with forks | | X | X |
| Pallet transporter | | X | X |
| Lift carrier with forks and crate presses for hive boxes | | X | X |
| Winch | | | X |
| Chipper | | X | X |
| Snow blower | | X | X |
| Front blade with hydraulic positioning | | X | X |
| Snow plough | | X | X |
| <i>Handler 400 ATTACHMENTS and accessories</i> | | | |
| HANDLER 400 - telescopic boom complete with forks | | | X |
| Bucket for Handler 400 | | | X |
| 4x1 bucket for Handler 400 | | | X |
| Fork with grab for Handler 400 | | | X |

Multifunction system attachments

With the multiple attachments available, the Cingo becomes a highly efficient and productive machine that's capable of significantly reducing costs for numerous different activities where specific machines are normally utilised.

The excellent features and performance of Cingo attachments and their total compatibility are derived from an integrated design and an exclusive production process.

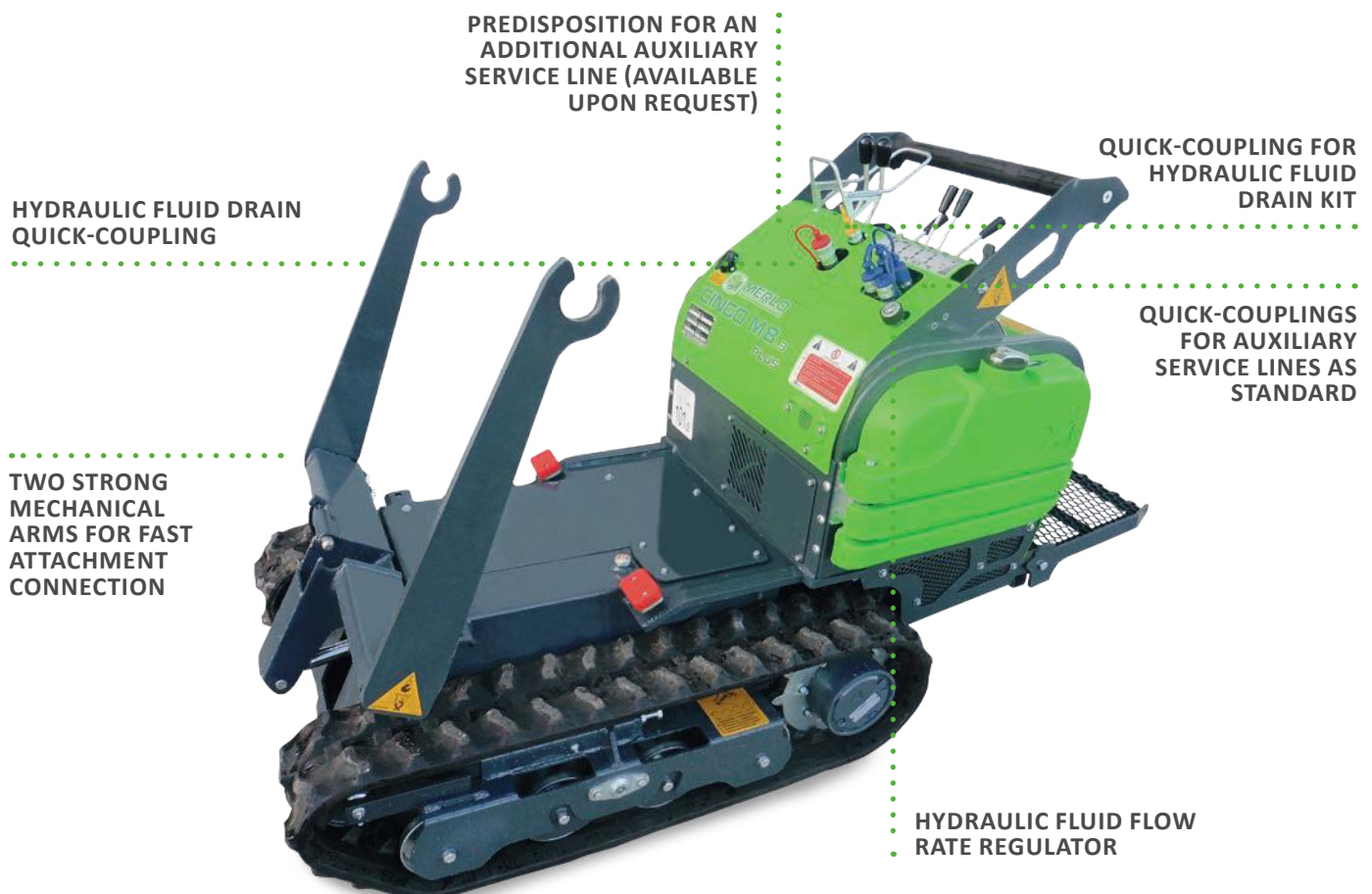
Patented device

What makes the Cingo system so versatile and unique is the complete interchangeability of the countless attachments.



The patented device for rapid attachment connection, which equips the truck with two strong mechanical arms, is the technological base of the Cingo Multifunction. Most of the Multifunction system's attachments are compatible with this device.

HYDRAULICALLY CONTROLLED QUICK-COUPLING DEVICE





Dumper

Ideal for transporting bulk materials and for precision unloading. Compatible with the quick-coupling system.

| | M 8.3EVO | M 12.3EVO |
|---------------------|----------|-----------|
| Dumper capacity (l) | 400 | 550 |
| Load capacity (kg) | 730 | 1.100 |
| Width (mm) | 800 | 920 |



Dumper with self-loading bucket

The advantage of having the front bucket with hydraulic lifting for loading the material.

Compatible with the quick-coupling system.

| | M 8.3EVO | M 12.3EVO |
|---------------------|----------|-----------|
| Dumper capacity (l) | 400 | 550 |
| Load capacity (kg) | 655 | 980 |
| Bucket capacity (l) | 80 | 90 |
| Width (mm) | 970 | 1.080 |



Dumper body with high unloading

The ability to efficiently transport aggregates, combined with the versatility of unloading at heights.

Compatible with the quick-coupling system.

| | M 8.3EVO | M 12.3EVO |
|-----------------------------|----------|-----------|
| Dumper capacity (l) | 400 | 400 |
| Load capacity (kg) | 610 | 1.010 |
| Width (mm) | 850 | 850 |
| Height of the obstacle (mm) | 1.300 | 1.300 |



3-way tipper body

The versatility of a tipper body with movable tipping sideboards on three sides.

| | M 8.3EVO | M 12.3EVO |
|-------------------------------|----------|-----------|
| Load capacity (kg) | 710 | 1.100 |
| Width (mm) | 750 | 920 |
| Length (mm) | 1.050 | 1.250 |
| Height of the sideboards (mm) | 450 | 450 |



Tipping body with sideboards

The versatility of a tipper body with movable sideboards, which can become an integral part of the loading surface if necessary, thus increasing its surface area.

| | M 8.3EVO | M 12.3EVO |
|---------------------------------------|----------|-----------|
| Load capacity (kg) | 720 | 1.100 |
| Width with sideboards closed (mm) | 800 | 1.000 |
| Width with horizontal sideboards (mm) | 1.445 | 1.650 |
| Height of the sideboards (mm) | 300 | 300 |



Flail mower

Ideal for shredding pruning clippings, stalks, small shrubs and for cleaning embankments and paths. Compatible with the quick-coupling system.

| | M 8.3EVO | M 12.3EVO |
|--------------------|----------|-----------|
| Working width (mm) | 800 | 1.000 |



Post hole auger

For drilling precision holes in the ground for poles, supports, or small trees. Compatible with the quick-coupling system.

| | M 8.3EVO | M 12.3EVO |
|----------------------------|----------|-----------|
| Hole diameter (mm) | 200 | 200 |
| Maximum working depth (mm) | 800 | 800 |



Chipper

Indispensable for shredding pruning clippings and other wooden materials, with the advantage of total mobility. Compatible with the quick-coupling system.

| | M 8.3EVO | M 12.3EVO |
|------------------------------|----------|-----------|
| Maximum branch diameter (mm) | 110 | 110 |



Fingerbar mower

An advanced hydraulically-operated system for precision mowing. The bar's floating function allows the mowing to be carried out following the contours of the ground. Compatible with the quick-coupling system.

| | M 8.3EVO | M 12.3EVO |
|----------------------|----------|-----------|
| Cutterbar width (mm) | 1.300 | 1.300 |



Rotavator

This attachment allows the seedbed to be prepared under any slope conditions in gardens, vegetable gardens, greenhouses, vineyards, orchards, and medium-sized parcels of land. Compatible with the quick-coupling system.

| | M 8.3EVO | M 12.3EVO |
|--------------------|----------|-----------|
| Working width (mm) | 800 | 1.000 |



Sprayer

A quick and easy-to-handle sprayer that's ideal for applying plant protection treatments between windrows on difficult terrain and with limited space.

| | M 8.3EVO | M 12.3EVO |
|-------------------|----------|-----------|
| Tank capacity (l) | 200 | 200 |



Winch with loading platform

The advantage of pairing a powerful hydraulic pulling system with a versatile means of transport. Ideal for use in the forestry sector.

| | M 12.3EVO |
|----------------------------|-----------|
| Maximum load capacity (kg) | 1.000 |
| Maximum pull force (kg) | 1.500 |
| Cable length (m) | 50 |



Manual hydraulic hammer

For carrying out small or large demolition operations with maximum precision and effectiveness.

| | M 8.3EVO | M 12.3EVO |
|----------------|----------|-----------|
| Tool mass (kg) | 20 | 20 |



Concrete mixer

Designed for mixing concrete in the required quantities, whenever and wherever needed. Compatible with the quick-coupling system.

| | M 8.3EVO | M 12.3EVO |
|-----------------------------|----------|-----------|
| Concrete mixer capacity (l) | 350 | 350 |
| Concrete yield (l) | 300 | 300 |
| Attachment width (mm) | 1.050 | 1.050 |



Concrete mixer with self-loading bucket

Helps increase productivity by directly loading the aggregates. Compatible with the quick-coupling system.

| | M 8.3EVO | M 12.3EVO |
|-----------------------------|----------|-----------|
| Concrete mixer capacity (l) | 350 | 350 |
| Concrete yield (l) | 300 | 300 |
| Bucket capacity (l) | 40 | 40 |
| Attachment width (mm) | 1.050 | 1.050 |



Masted lift

Ideal for precision handling operations when high lifting capacities are required. Compatible with the quick-coupling system.

| | M 8.3EVO | M 12.3EVO |
|----------------------------|----------|-----------|
| Maximum load capacity (kg) | 200 | 400 |
| Lift height (mm) | 1.600 | 1.800 |



Telehandler

An agile work tool that can be equipped with various types of attachments (shovels, forks, grapples, buckets, etc.) for excavating, lifting, loading, transporting, and handling operations. Compatible with the quick-coupling system.

| | M 12.3EVO |
|----------------------------|-----------|
| Maximum load capacity (kg) | 400 |
| Lift height (mm) | 3.400 |



Snow blower

This hydraulically-operated unit features a turbine ejector with a manually selectable continuous spray direction. Compatible with the quick-coupling system.

| | M 8.3EVO | M 12.3EVO |
|--------------------|----------|-----------|
| Working width (mm) | 800 | 1.000 |



Snow plough

Hydraulic orientation, suitable for snow removal. It is equipped with an anti-shock system with spring return, which allows for easy use while avoiding problems on uneven ground. Wear-resistant steel scraper.

| | M 8.3EVO | M 12.3EVO |
|-----------------------|----------|-----------|
| Blade width (mm) | 1.300 | 1.300 |
| Blade height (mm) | 470 | 470 |
| Blade angle (degrees) | ±30 | ±30 |



Front blade

Easy to operate and ideal for cleaning stalls, piling loose materials, and levelling areas of ground.

| | M 8.3EVO | M 12.3EVO |
|-----------------------|----------|-----------|
| Blade width (mm) | 1.100 | 1.300 |
| Blade height (mm) | 470 | 470 |
| Blade angle (degrees) | ±18 | ±18 |





| MODELS | | | M500 | M700 TD |
|--------------------------------|--|---------------|---------------------------------|-------------------------------|
| SUBGROUP | | | TRANSPORTER | TRANSPORTER |
| PERFORMANCE - DIMENSIONS | Maximum capacity | kg | 500 | 700 |
| | Machine weight | kg | 210/230 | 480 |
| | Maximum length | mm | 1.471 | 1.640 |
| | Maximum width | mm | 690 | 750 |
| | Maximum height | mm | 1.125 | 1.230 |
| | Fixed / variable track width | | FIXED | FIXED |
| | Distance off the ground/Ground clearance | mm | 115 | 100 |
| | Max. longitudinal slope | | 35% | 35% |
| | Max. cross slope | | 20% | 20% |
| | Maximum speed | km/h | 3,5 | 4 |
| ENGINE | Engine | Make | Honda | Honda |
| | Model | Number | GX 200 | GX 390 |
| | Fuel | | Petrol | Petrol |
| | Cylinder no. | | 1 | 1 |
| | Displacement | cc | 196 | 389 |
| | Max. engine speed | rpm | 3.850±100 | 3.600 |
| | Power | kW | 4,1 kW / 3.600 rpm | 8,7 kW |
| | Max. torque | | 12,4 Nm / 1,26 Kgfm / 2.500 rpm | 26,5 Nm |
| | Ignition | | Manual pull start | Manual pull start/Electric |
| | Engine cooling | | Air | Air |
| | Fuel tank | l | 3,1 | 6,1 |
| | Fuel consumption | l/h 3.600 rpm | 1,7 | 3,5 |
| | Battery | V/Ah | - | 12 V |
| TRANSMISSION | Transmission type | | Hydraulic | Hydraulic |
| | Pump | cc | 3,2 + 3,2 | 4,27+4,27 |
| | Flow | l/min | 11,5+11,5 | 14+14 |
| | Hydraulic motor | | Orbital | Gear motor |
| | Maximum operating pressure | bar | 150 | 160 |
| | Controls / Levers | | Hydraulic | Hydraulic |
| | Operator's console | | On the ground | On the ground / Platform |
| | Parking brakes | | Manual | Automatic Fast second gear |
| TRACKS | Type | | Rubber | Rubber |
| | Dimensions | | 160x72x33 | 180x72x36 |
| | Rollers per side | | 3 | 4 |
| HYDRAULIC CIRCUIT | Service pump | cc | - | Gears 6 |
| | Auxiliary circuit oil flow rate | l/min | - | 20 |
| | Maximum pressure | bar | - | 180 |
| | Service and transmission oil tank | litres | 21 | 18 |
| | Auxiliary circuit oil cooling | | no | yes |
| | Service lines | | 2 | 4 |
| | Levers | | - | - |
| | Auxiliary services control valve | | no | - |
| MULTIFUNCTION - QUICK-COUPLING | | | no | no |

| M8.3TD EVO | M8.3 EVO | M12.3 EVO |
|-----------------------------|-----------------------------|-----------------------------|
| TRANSPORTER | MULTIFUNCTION | MULTIFUNCTION |
| 800 | 800 | 1.200 |
| 510 | 510 | 720 |
| 1.800 | 1.620 | 1.800 |
| 800 | 800 | 1.000 |
| 1.175 | 1.175 | 1.144 |
| FIXED | FIXED | FIXED |
| 120 | 100 | 110 |
| 35% | 35% | 35% |
| 20% | 20% | 20% |
| 4 | 4 | 5 |
| Kubota | Kubota | Kubota |
| Z-602 | Z-602 | D722 |
| Diesel | Diesel | Diesel |
| 2 | 2 | 3 |
| 600 | 600 | 720 |
| 3.600 | 3.600 | 3.600 |
| 12,5 kW / 3.600 rpm | 12,5 kW / 3.600 rpm | 14,9 kW / 3.600 rpm |
| 38 Nm / 3.600 rpm | 38 Nm / 3.600 rpm | 46 Nm / 2.600 rpm |
| Electrical | Electrical | Electrical |
| Liquid-type | Liquid-type | Liquid-type |
| 14 | 14 | 14 |
| 2,8 | 3,5 | 4 |
| 12 V | 12 V | 12 V |
| Hydrostatic | Hydrostatic | Hydrostatic |
| 11+11 | 11+11 | 13+13 |
| 38+38 | 38+38 | 45+45 |
| Gear motor | Gear motor | Gear motor |
| 160 | 160 | 200 |
| Hydraulic | Hydraulic | Hydraulic |
| On the ground / Platform | On the ground / Platform | On the ground / Platform |
| Automatic / Manual Selector | Automatic / Manual Selector | Automatic / Manual Selector |
| Rubber | Rubber | Rubber |
| 180x72x36 | 180x72x36 | 230x72x40 |
| 4 | 4 | 4 |
| Gears 8 + 2,5 | Gears 8 + 2,5 | Gears 8 + 2,5 |
| 27 + 8 | 27 + 8 | 27 + 8 |
| 180 | 180 | 200 |
| 18 | 18 | 26 |
| yes | yes | yes |
| 8 | 8 | 8 |
| - | - | - |
| SD5/3 levers | SD5/4 levers + SD5/1 lever | SD5/4 levers + SD5/1 lever |
| no | yes | yes |



CINGO multi-purpose transporters

Data, characteristics and illustrations contained in this document are indicative and not binding.

Merlo Spa pursues a policy of continuous research and development, therefore, our products may have different characteristics from those described or may undergo changes without any prior notice. The products shown may include optional equipment.



MERLO S.P.A.

Via Nazionale, 9 - 12010 S. Defendente de Cervasca - Cuneo - Italie

Tel. +39 0171 614111 - Fax +39 0171 684101

www.merlo.com - info@merlo.com

T392EN 0221